



2006-07
Certificación número 22

Yo, Sylvia Tubéns Castillo, Secretaria Ejecutiva del Senado Académico de la Universidad de Puerto Rico en Cayey, CERTIFICO:

Que el Senado Académico, en su reunión ordinaria del jueves 16 de noviembre de 2006, tuvo ante su consideración un informe sobre la eficacia de los programas académicos: Cupos, IGS, retención y graduación, sometido por el Sen. José N. Caraballo, Decano Académico Interino.

Luego de la exposición de rigor, el Senado aprobó la siguiente

CERTIFICACIÓN:

El Senado Académico estableció que el Cupo Institucional Diurno para el año académico 2007-08 será de 3,750 estudiantes.

El documento presentado se hará formar parte de la presente Certificación.

Y, PARA QUE ASÍ CONSTE, expido la presente Certificación en Cayey, Puerto Rico, el día veintisiete de noviembre de dos mil seis.

Sylvia Tubéns Castillo

Sylvia Tubéns Castillo
Secretaria Ejecutiva

Vo. Bo.

Ram S. Lamba
Rector y Presidente
Senado Académico

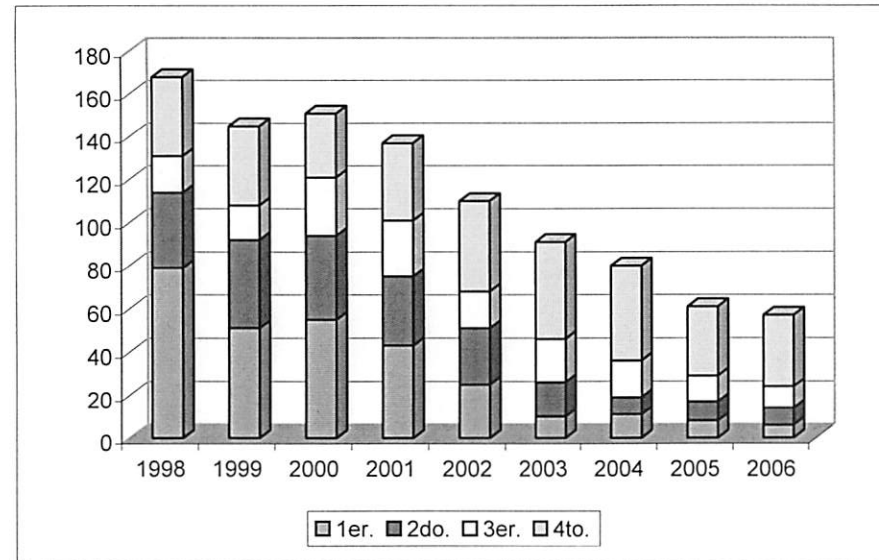
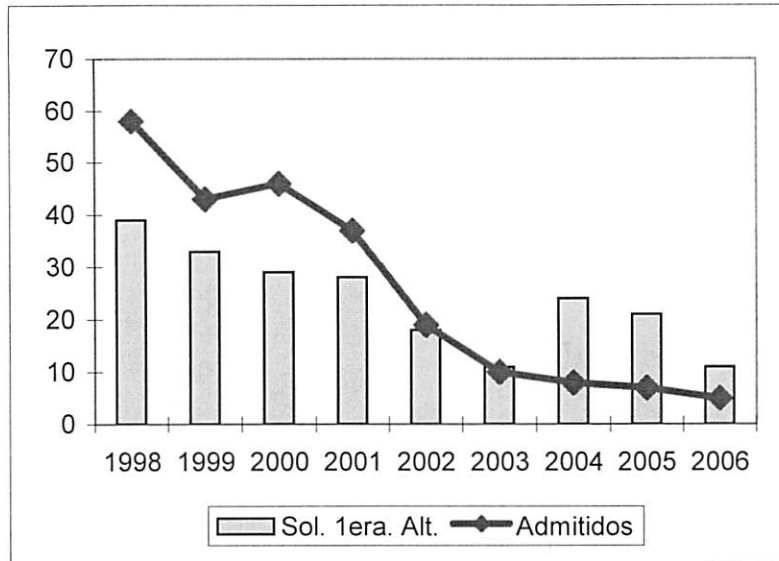


Secundaria en Ciencias

Año	IGS	Cupo	Total						Decanato de Asuntos Académicos						
			Sol.	Sol. 1er.	Adm.	Ad/Sol	Mat.	Total Matric.	1er.	2do.	3er.	4to.	%4to.	otro	Grad.
1998	235	60	100	39	58	58.0%	55	170	79	35	17	37	21.8%	2	
1999	280	60	136	33	43	31.6%	39	148	51	41	16	37	25.0%	3	17
2000	250	60	105	29	46	43.8%	41	155	55	39	27	30	19.4%	4	6
2001	280	30	110	28	37	33.6%	32	141	43	32	26	36	25.5%	4	14
2002	280	20	95	18	19	20.0%	18	121	25	26	17	42	34.7%	11	6
2003	284	10	56	11	10	17.9%	8	99	10	16	20	45	45.5%	8	10
2004	298	10	96	24	8	8.3%	8	87	11	8	17	44	50.6%	7	13
2005	298	7	68	21	7	10.3%	7	66	8	9	12	32	48.5%	5	10
2006	296	5	20	11	5	25.0%	6	65	6	8	10	33	50.8%	8	12

-2.9

4.5%

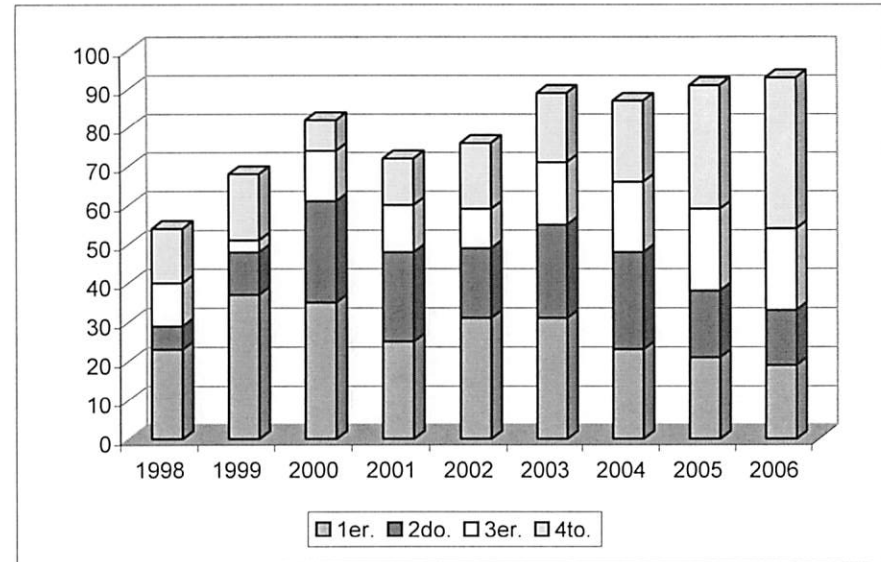
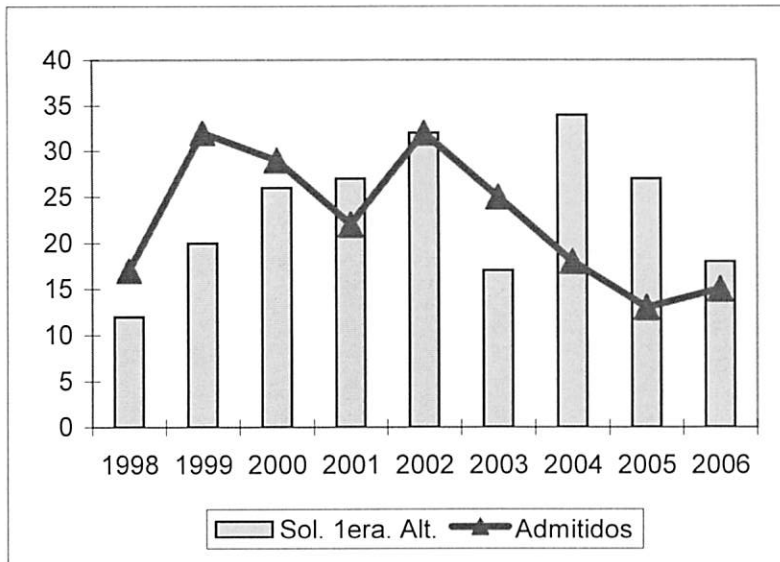


Secundaria en Matemáticas

Año	IGS	Cupo	Total					Mat.	Decanato de Asuntos Académicos						
			Sol.	Sol. 1er.	Adm.	Ad/Sol	%4to.		1er.	2do.	3er.	4to.	otro	Grad.	
1998	230	30	37	12	17	45.9%	17	57	23	6	11	14	24.6%	3	
1999	230	30	51	20	32	62.7%	30	70	37	11	3	17	24.3%	2	9
2000	230	30	69	26	29	42.0%	26	82	35	26	13	8	9.8%	0	6
2001	235	15	72	27	22	30.6%	19	75	25	23	12	12	16.0%	3	3
2002	250	28	97	32	32	33.0%	30	82	31	18	10	17	20.7%	6	6
2003	253	25	66	17	25	37.9%	23	97	31	24	16	18	18.6%	8	5
2004	284	15	103	34	18	17.5%	18	94	23	25	18	21	22.3%	7	10
2005	284	14	86	27	13	15.1%	16	92	21	17	21	32	34.8%	1	9
2006	284	15	33	18	15	45.5%	14	95	19	14	21	39	41.1%	2	8

0.9

2.1%

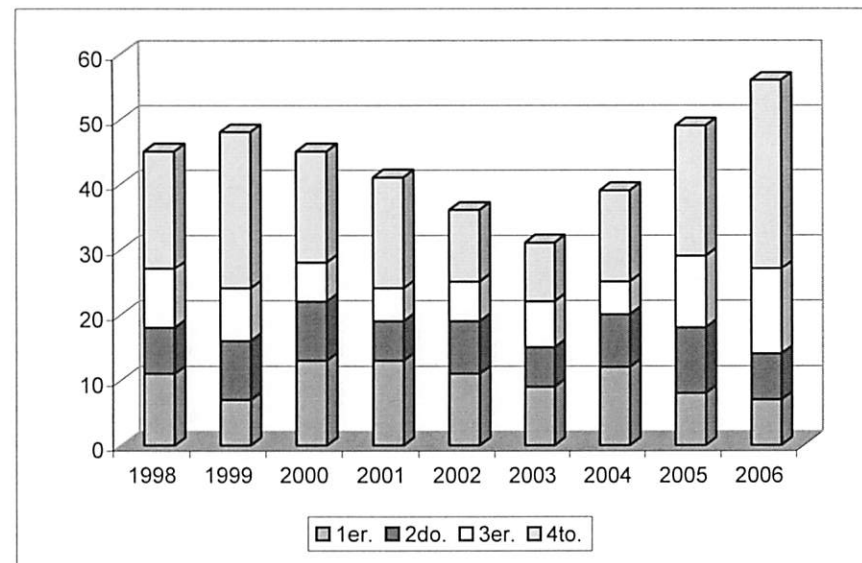
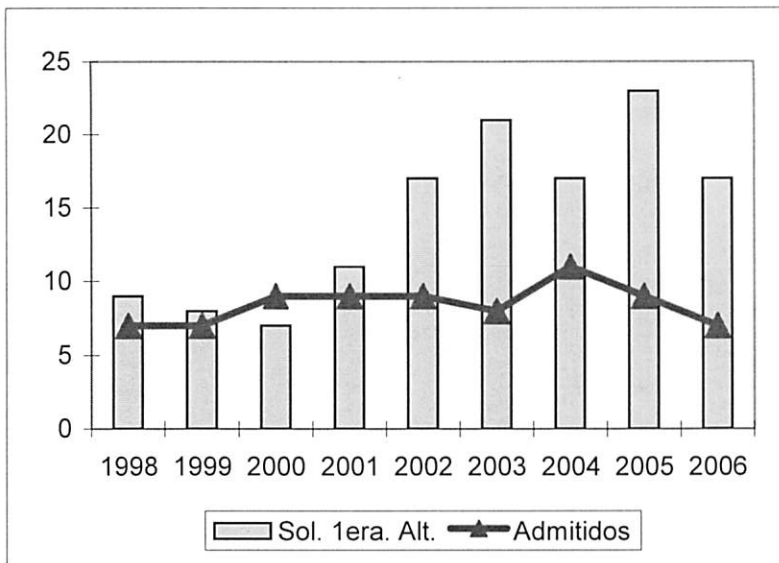


Secundaria en Inglés

Año	IGS	Cupo	Total					Mat.	Decanato de Asuntos Académicos						
			Sol.	Sol. 1er.	Adm.	Ad/Sol	%4to.		Total Matric.	1er.	2do.	3er.	4to.	%4to.	otro
1998	230	10	24	9	7	29.2%	5	47	11	7	9	18	38.3%	2	
1999	230	10	29	8	7	24.1%	6	52	7	9	8	24	46.2%	4	2
2000	230	10	29	7	9	31.0%	7	45	13	9	6	17	37.8%	0	6
2001	235	8	26	11	9	34.6%	8	44	13	6	5	17	38.6%	3	5
2002	235	8	48	17	9	18.8%	8	36	11	8	6	11	30.6%	0	6
2003	276	10	47	21	8	17.0%	7	31	9	6	7	9	29.0%	0	7
2004	281	10	56	17	11	19.6%	10	39	12	8	5	14	35.9%	0	6
2005	281	9	53	23	9	17.0%	6	49	8	10	11	20	40.8%	0	2
2006	281	10	23	17	7	30.4%	6	56	7	7	13	29	51.8%	0	3

1.8

0.4%

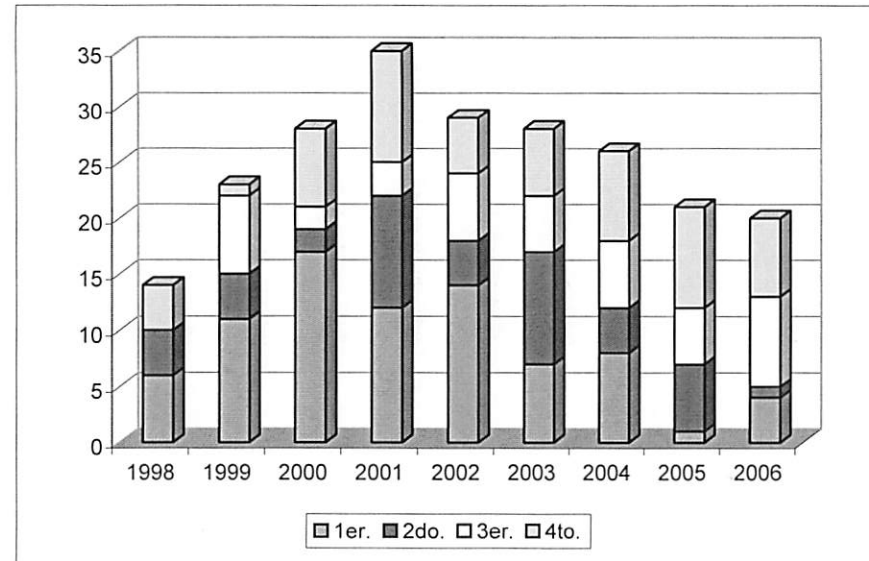
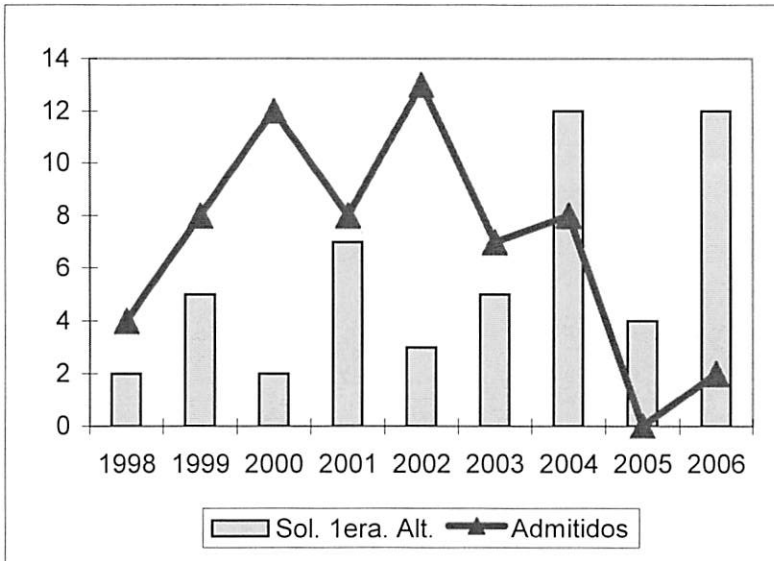


Secundaria en Ciencias Sociales

Año	IGS	Cupo	Total					Mat.	Total Matric.	Decanato de Asuntos Académicos						
			Sol.	Sol. 1er.	Adm.	Ad/Sol	1er.			2do.	3er.	4to.	%4to.	otro	Grad.	
1998	230	8	9	2	4	44.4%	4	18	6	4	0	4	22.2%	4	0	
1999	230	10	17	5	8	47.1%	8	25	11	4	7	1	4.0%	2	0	
2000	230	10	16	2	12	75.0%	12	28	17	2	2	7	25.0%	0	0	
2001	235	8	17	7	8	47.1%	8	37	12	10	3	10	27.0%	2	1	
2002	235	7	21	3	13	61.9%	11	34	14	4	6	5	14.7%	5	3	
2003	250	7	20	5	7	35.0%	6	33	7	10	5	6	18.2%	5	3	
2004	271	7	34	12	8	23.5%	8	28	8	4	6	8	28.6%	2	3	
2005	271	1	19	4	0	0.0%	1	22	1	6	5	9	40.9%	1	3	
2006	277	2	16	12	2	12.5%	3	20	4	1	8	7	35.0%	0	4	

0.9

2.7%

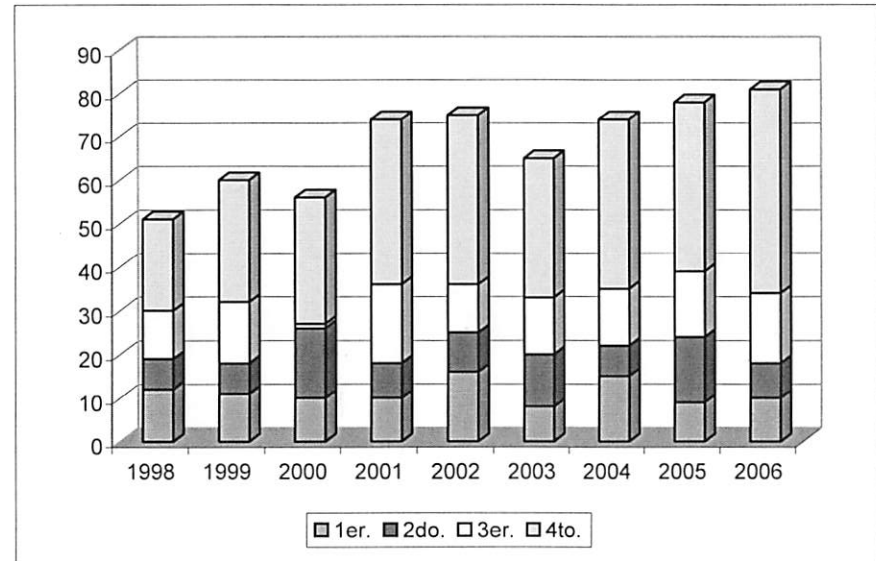
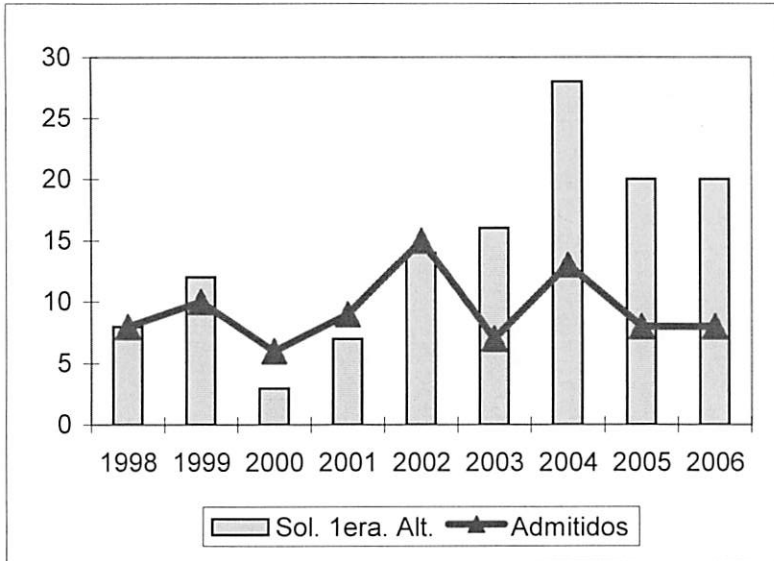


Secundaria en Español

Año	IGS	Cupo	Total					Mat.	Total Matric.	Decanato de Asuntos Académicos					
			Sol.	Sol. 1er.	Adm.	Ad/Sol	1er.			2do.	3er.	4to.	%4to.	otro	Grad.
1998	230	10	21	8	8	38.1%	7	51	12	7	11	21	41.2%	0	
1999	230	10	25	12	10	40.0%	10	62	11	7	14	28	45.2%	2	3
2000	230	10	19	3	6	31.6%	6	65	10	16	1	29	44.6%	0	7
2001	235	5	25	7	9	36.0%	9	76	10	8	18	38	50.0%	2	9
2002	235	8	44	14	15	34.1%	14	82	16	9	11	39	47.6%	7	10
2003	266	8	53	16	7	13.2%	6	67	8	12	13	32	47.8%	2	15
2004	302	12	75	28	13	17.3%	13	79	15	7	13	39	49.4%	5	9
2005	302	8	46	20	8	17.4%	7	79	9	15	15	39	49.4%	1	12
2006	287	8	22	20	8	36.4%	9	83	10	8	16	47	56.6%	2	9

2.2

1.4%

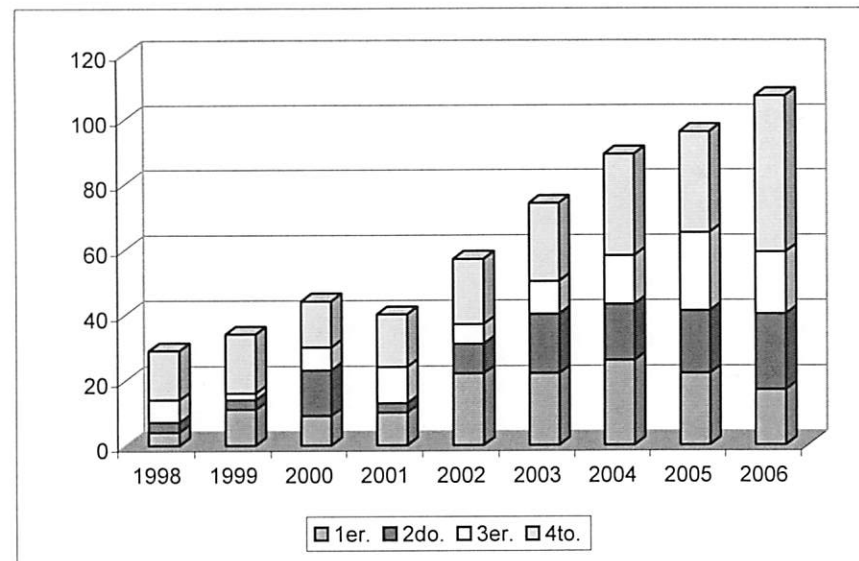
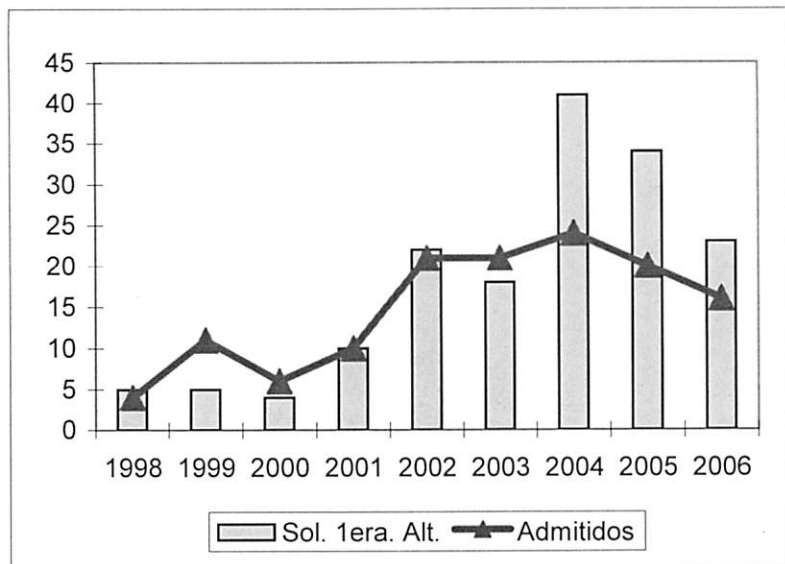


Secundaria en Historia

Año	IGS	Cupo	Total					Mat.	Total Matric.	Decanato de Asuntos Académicos					
			Sol.	Sol. 1er.	Adm.	Ad/Sol	1er.			2do.	3er.	4to.	%4to.	otro	Grad.
1998	230	10	13	5	4	30.8%	4	35	4	3	7	15	42.9%	6	
1999	230	10	19	5	11	57.9%	10	41	11	3	2	18	43.9%	7	2
2000	230	10	23	4	6	26.1%	4	44	9	14	7	14	31.8%	0	4
2001	235	8	31	10	10	32.3%	10	42	10	3	11	16	38.1%	2	7
2002	235	20	52	22	21	40.4%	20	59	22	9	6	20	33.9%	2	6
2003	244	20	51	18	21	41.2%	18	76	22	18	10	24	31.6%	2	6
2004	267	20	102	41	24	23.5%	24	90	26	17	15	31	34.4%	1	10
2005	276	20	77	34	20	26.0%	19	96	22	19	24	31	32.3%	0	13
2006	273	18	38	23	16	42.1%	16	107	17	23	19	48	44.9%	0	7

4.0

-0.5%

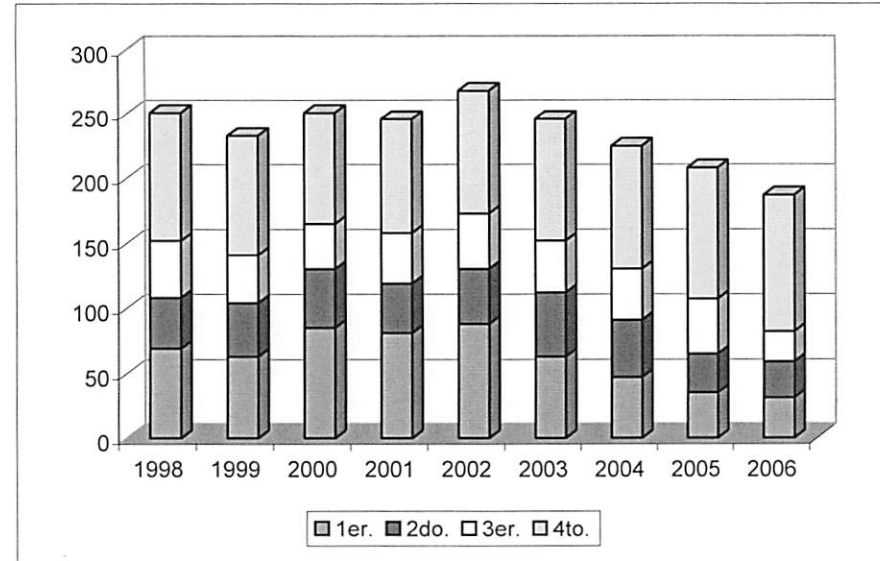
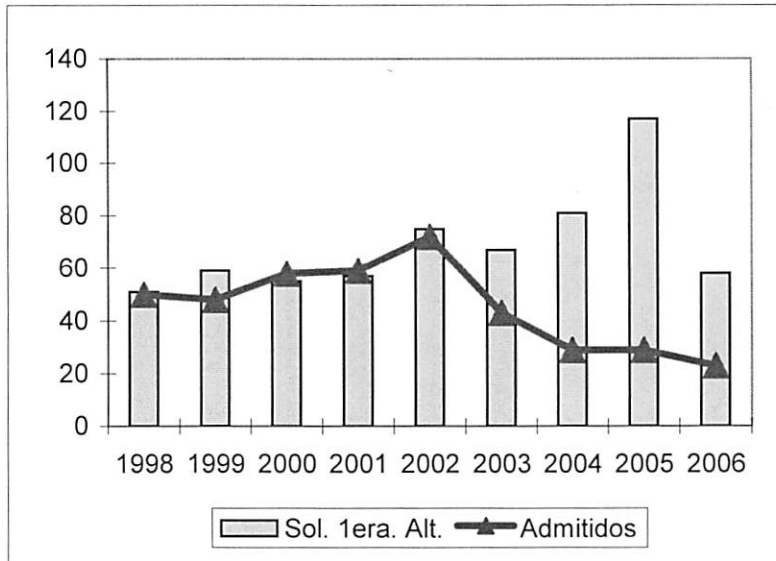


Secundaria en Educación Física

Año	IGS	Cupo	Total					Mat.	Decanato de Asuntos Académicos						
			Sol.	Sol. 1er.	Adm.	Ad/Sol	%4to.		Total Matric.	1er.	2do.	3er.	4to.	%4to.	otro
1998	230	50	144	51	50	34.7%	42	256	69	39	44	99	38.7%	5	
1999	230	45	137	59	48	35.0%	42	236	63	41	37	92	39.0%	3	36
2000	230	50	133	55	58	43.6%	53	251	85	45	35	86	34.3%	0	32
2001	235	45	162	57	59	36.4%	53	254	81	38	39	88	34.6%	8	34
2002	235	35	212	75	72	34.0%	70	287	88	42	43	95	33.1%	19	30
2003	246	33	176	67	43	24.4%	41	251	63	49	40	94	37.5%	5	33
2004	258	23	215	81	29	13.5%	28	230	47	44	39	95	41.3%	5	33
2005	272	30	243	117	29	11.9%	32	211	35	30	42	101	47.9%	3	27
2006	269	23	98	58	23	23.5%	24	195	31	28	23	105	53.8%	8	28

4.4

1.7%



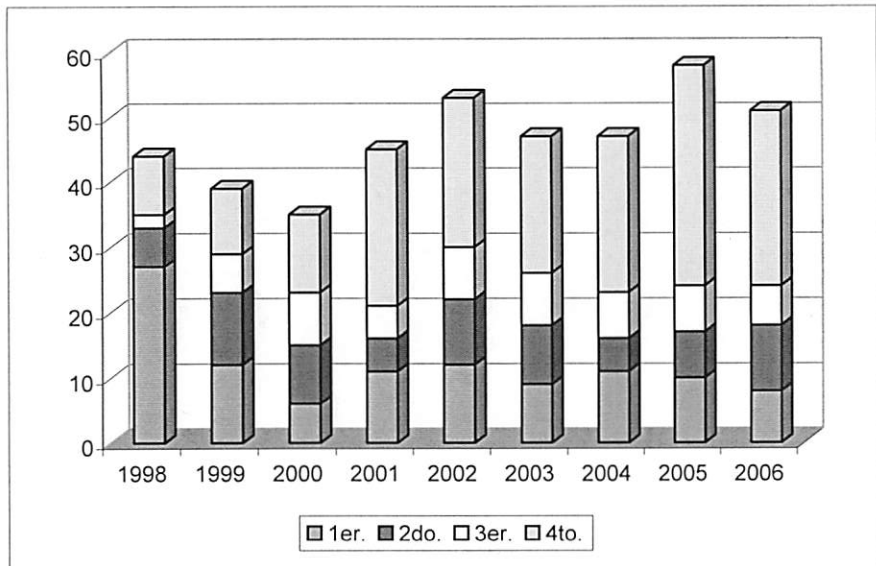
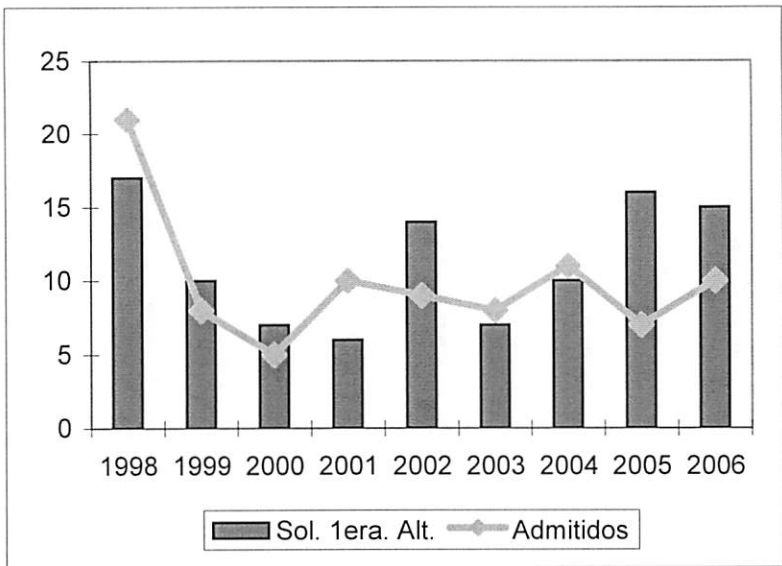
Elemental en Ciencias

Decanato de Asuntos Académicos

Año	IGS	Cupo	Total					Mat.	Total Matric.	Total					Grad.
			Sol.	Sol. 1er.	Adm.	Ad/Sol	%4to			1er.	2do.	3er.	4to.	otro	
1998	230	20	47	17	21	44.7%	19	44	27	6	2	9	20.5%	0	
1999	280	20	31	10	8	25.8%	7	39	12	11	6	10	25.6%	0	4
2000	250	20	29	7	5	17.2%	5	35	6	9	8	12	34.3%	0	3
2001	280	15	43	6	10	23.3%	10	45	11	5	5	24	53.3%	0	5
2002	280	15	42	14	9	21.4%	8	54	12	10	8	23	42.6%	1	3
2003	281	8	46	7	8	17.4%	7	49	9	9	8	21	42.9%	2	10
2004	283	7	49	10	11	22.4%	10	48	11	5	7	24	50.0%	1	8
2005	292	7	68	16	7	10.3%	8	58	10	7	7	34	58.6%	0	5
2006	289	8	22	15	10	45.5%	8	52	8	10	6	27	51.9%	1	13

0.3

4.1%

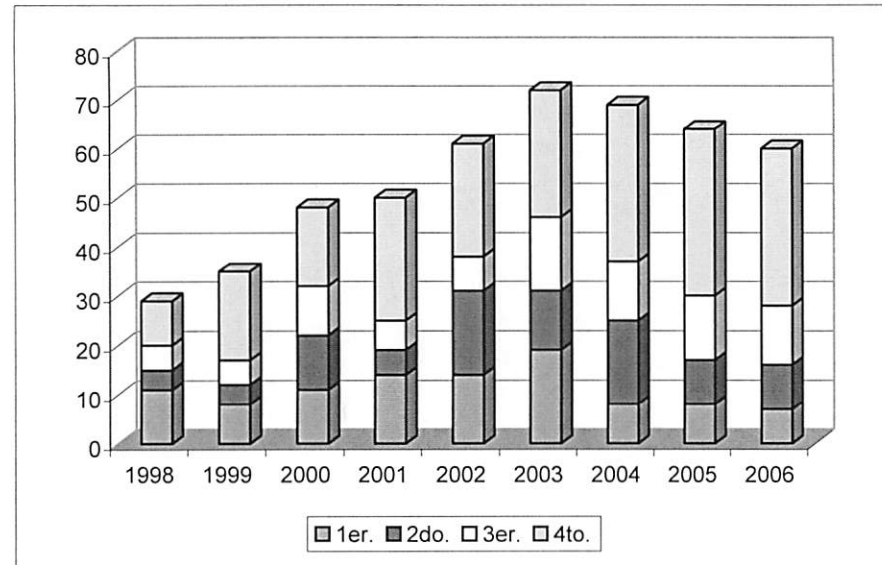
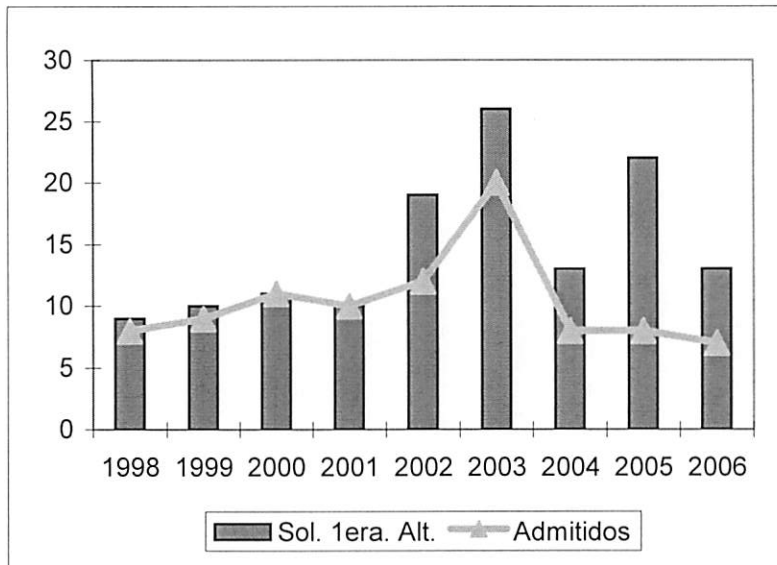


Elemental en Matemáticas

Año	IGS	Cupo	Total					Mat.	Decanato de Asuntos Académicos						
			Sol.	Sol. 1er.	Adm.	Ad/Sol	%4to		Total Matric.	1er.	2do.	3er.	4to.	%4to	otro
1998	236	10	36	9	8	22.2%	7	31	11	4	5	9	29.0%	1	
1999	230	10	33	10	9	27.3%	7	36	8	4	5	18	50.0%	1	0
2000	230	10	39	11	11	28.2%	10	49	11	11	10	16	32.7%	1	5
2001	235	8	47	10	10	21.3%	10	54	14	5	6	25	46.3%	4	5
2002	250	14	59	19	12	20.3%	11	64	14	17	7	23	35.9%	3	4
2003	267	20	76	26	20	26.3%	18	76	19	12	15	26	34.2%	4	11
2004	283	10	66	13	8	12.1%	8	71	8	17	12	32	45.1%	2	6
2005	283	8	55	22	8	14.5%	7	65	8	9	13	34	52.3%	1	12
2006	273	5	21	13	7	33.3%	6	61	7	9	12	32	52.5%	1	12

1.2

1.9%

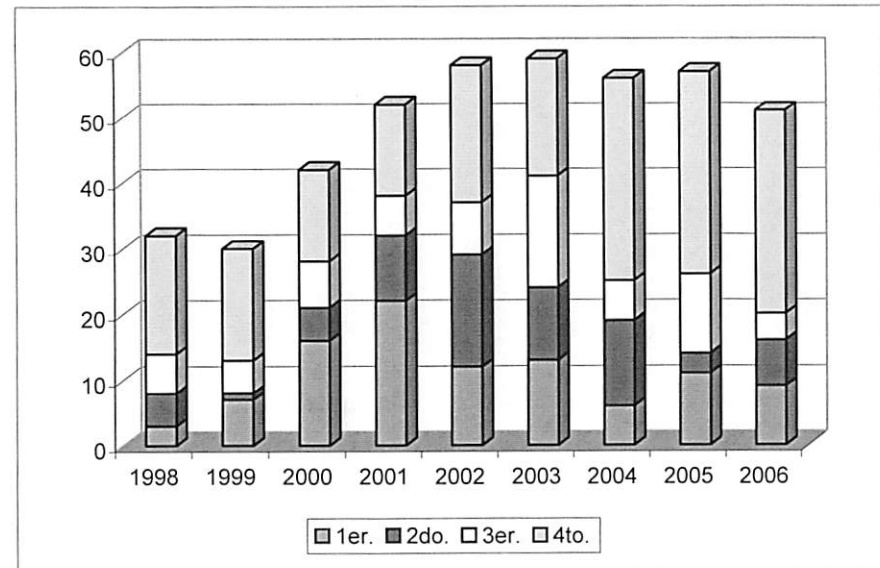
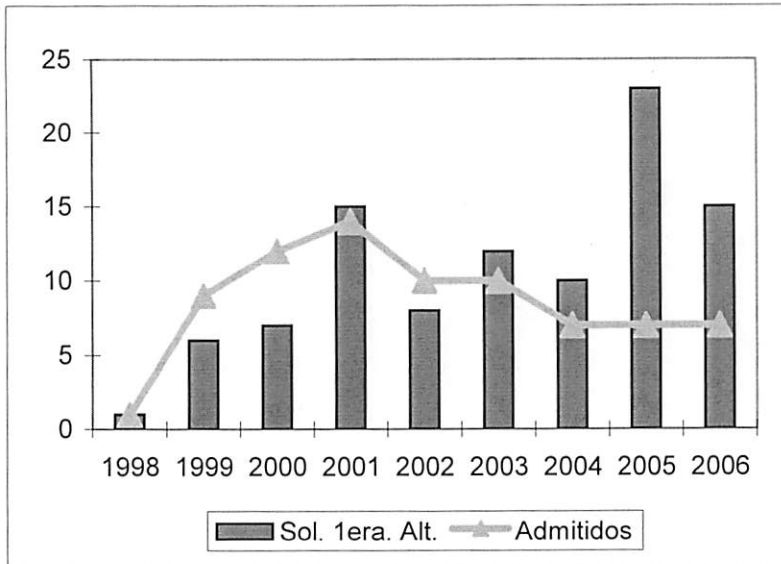


Elemental en Inglés

Año	IGS	Cupo	Total					Mat.	Total Matric.	Decanato de Asuntos Académicos					
			Sol.	Sol. 1er.	Adm.	Ad/Sol	%4to			1er.	2do.	3er.	4to.	otro	Grad.
1998	230	10	15	1	1	6.7%	1	33	3	5	6	18	54.5%	1	
1999	230	10	25	6	9	36.0%	7	30	7	1	5	17	56.7%	0	5
2000	230	10	32	7	12	37.5%	8	43	16	5	7	14	32.6%	1	4
2001	235	8	30	15	14	46.7%	13	54	22	10	6	14	25.9%	2	5
2002	235	8	34	8	10	29.4%	8	60	12	17	8	21	35.0%	2	6
2003	255	10	49	12	10	20.4%	10	65	13	11	17	18	27.7%	6	7
2004	263	7	41	10	7	17.1%	6	58	6	13	6	31	53.4%	2	2
2005	278	7	63	23	7	11.1%	7	61	11	3	12	31	50.8%	4	4
2006	276	9	24	15	7	29.2%	7	53	9	7	4	31	58.5%	2	7

1.8

0.7%



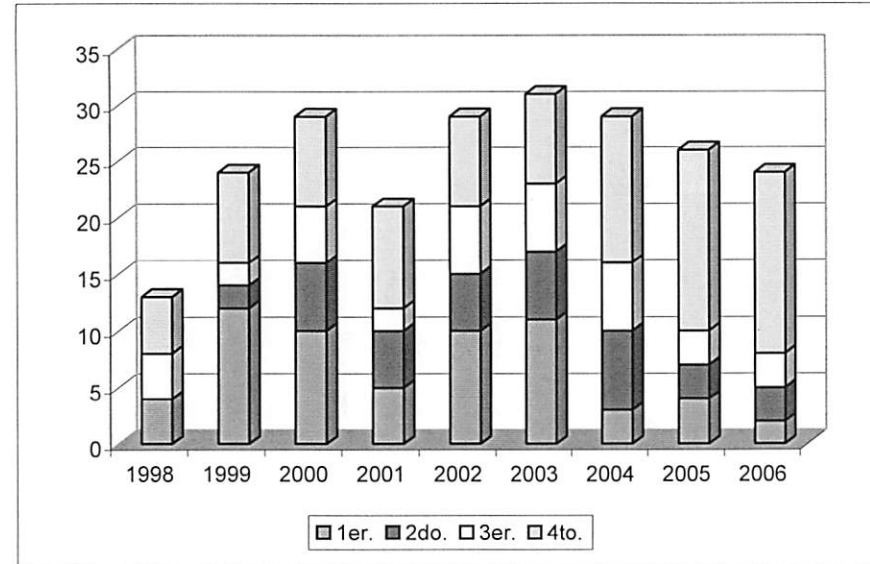
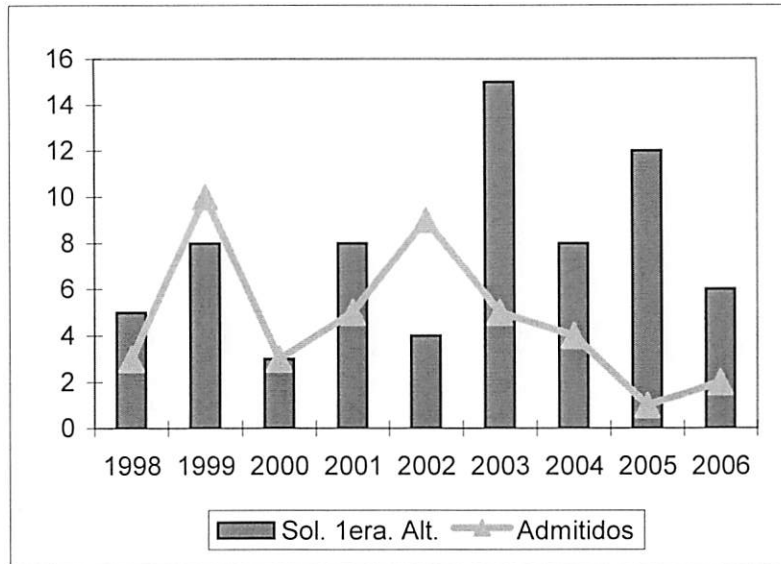
Elemental en Estudios Sociales

Decanato de Asuntos Académicos

Año	IGS	Cupo	Total					Mat.	Total Matric.	Total					Grad.
			Sol.	Sol. 1er.	Adm.	Ad/Sol	1er.			2do.	3er.	4to.	%4to	otro	
1998	230	8	14	5	3	21.4%	2	14	4	0	4	5	35.7%	1	
1999	230	10	27	8	10	37.0%	10	27	12	2	2	8	29.6%	3	0
2000	230	10	13	3	3	23.1%	3	30	10	6	5	8	26.7%	1	3
2001	235	5	17	8	5	29.4%	4	24	5	5	2	9	37.5%	3	4
2002	235	5	22	4	9	40.9%	8	34	10	5	6	8	23.5%	5	4
2003	274	5	42	15	5	11.9%	5	34	11	6	6	8	23.5%	3	2
2004	277	4	33	8	4	12.1%	3	30	3	7	6	13	43.3%	1	2
2005	303	1	41	12	1	2.4%	1	29	4	3	3	16	55.2%	3	2
2006	274	2	14	6	2	14.3%	2	26	2	3	3	16	61.5%	2	8

0.6

3.3%

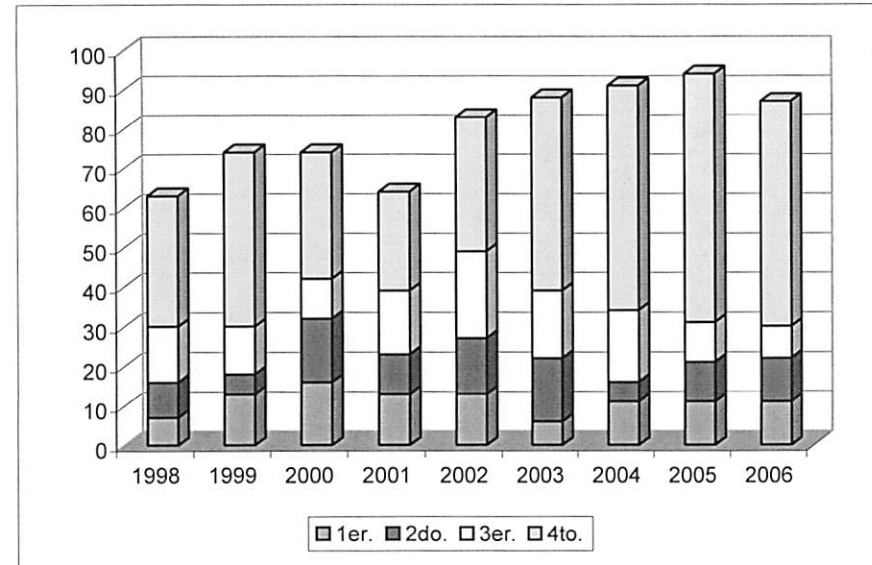
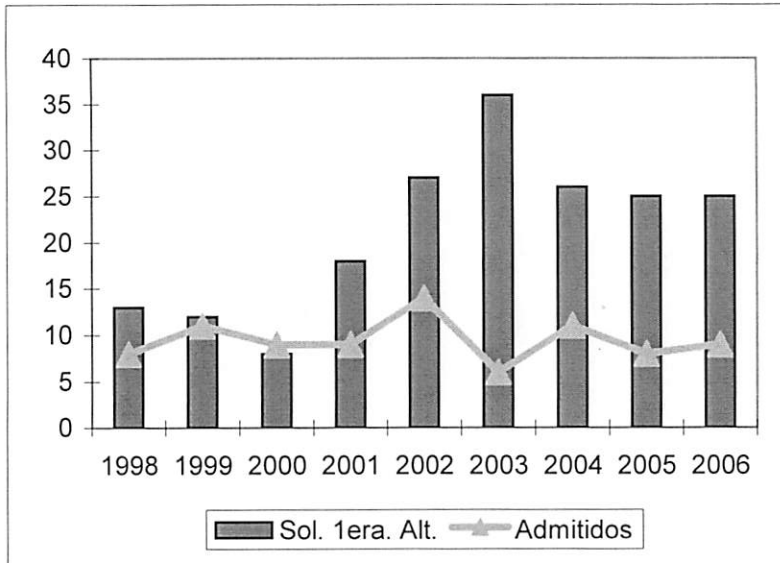


Elemental en Español

Año	IGS	Cupo	Total					Mat.	Total						
			Sol.	Sol. 1er.	Adm.	Ad/Sol	Matric.		1er.	2do.	3er.	4to.	%4to	otro	Grad.
1998	230	10	40	13	8	20.0%	6	65	7	9	14	33	50.8%	2	
1999	230	10	35	12	11	31.4%	9	78	13	5	12	44	56.4%	4	2
2000	230	10	24	8	9	37.5%	9	77	16	16	10	32	41.6%	3	22
2001	235	8	40	18	9	22.5%	9	68	13	10	16	25	36.8%	4	15
2002	235	8	58	27	14	24.1%	12	89	13	14	22	34	38.2%	6	14
2003	290	8	74	36	6	8.1%	6	92	6	16	17	49	53.3%	4	7
2004	277	9	65	26	11	16.9%	9	98	11	5	18	57	58.2%	7	16
2005	277	8	70	25	8	11.4%	11	97	11	10	10	63	64.9%	3	14
2006	287	10	32	25	9	28.1%	8	91	11	11	8	57	62.6%	4	22

2.4

2.0%



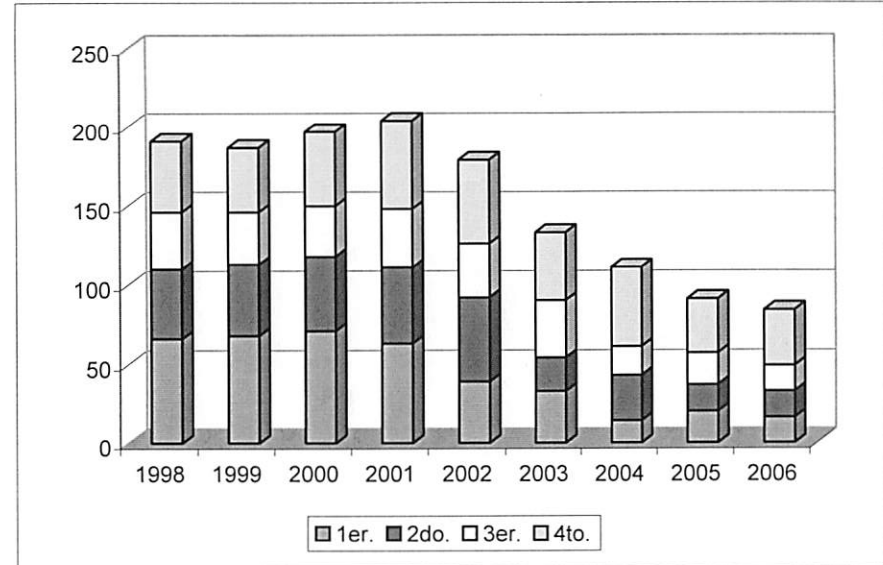
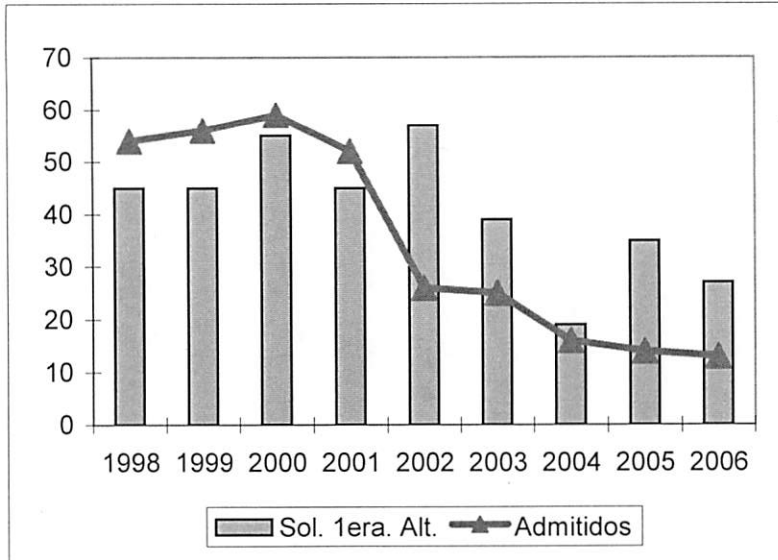
Programa General en Ciencias Sociales

Decanato de Asuntos Académicos

Año	IGS	Cupo	Total						Mat.	Total Matric.	1er.	2do.	3er.	4to.	%4to.	otro	Grad.
			Sol.	Sol. 1er.	Adm.	Ad/Sol	Sol.	Sol. 1er.									
1998	230	55	211	45	54	25.6%	46	191	66	44	36	45	23.6%	0			
1999	230	55	170	45	56	32.9%	49	187	68	45	33	41	21.9%	0	17		
2000	230	55	182	55	59	32.4%	52	201	71	47	32	47	23.4%	4	8		
2001	230	40	178	45	52	29.2%	49	204	63	48	37	56	27.5%	0	14		
2002	260	25	178	57	26	14.6%	24	179	39	53	34	53	29.6%	0	15		
2003	270	25	103	39	25	24.3%	24	134	33	21	36	43	32.1%	1	18		
2004	277	15	69	19	16	23.2%	14	111	14	29	18	50	45.0%	0	14		
2005	290	15	144	35	14	9.7%	15	92	20	17	20	34	37.0%	1	24		
2006	290	13	45	27	13	28.9%	13	87	16	17	16	35	40.2%	3	12		

-3.0

2.7%



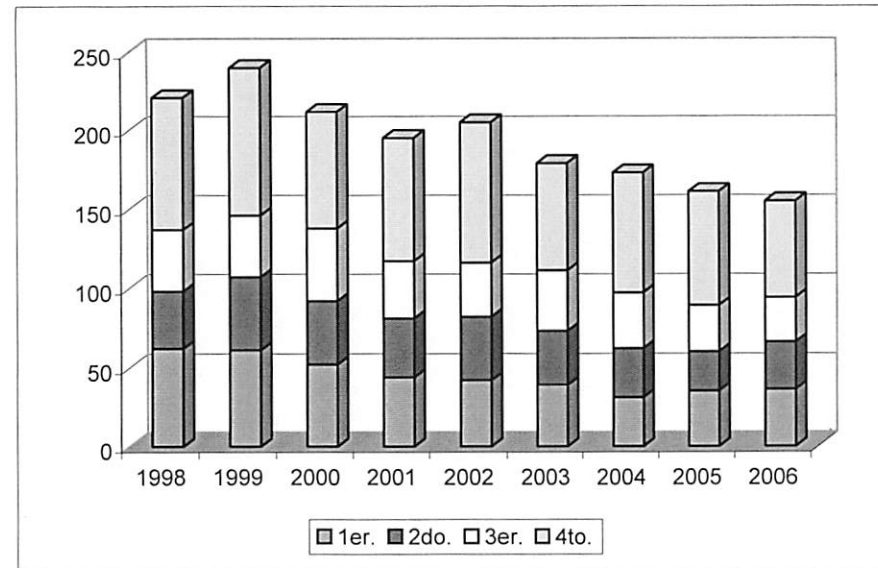
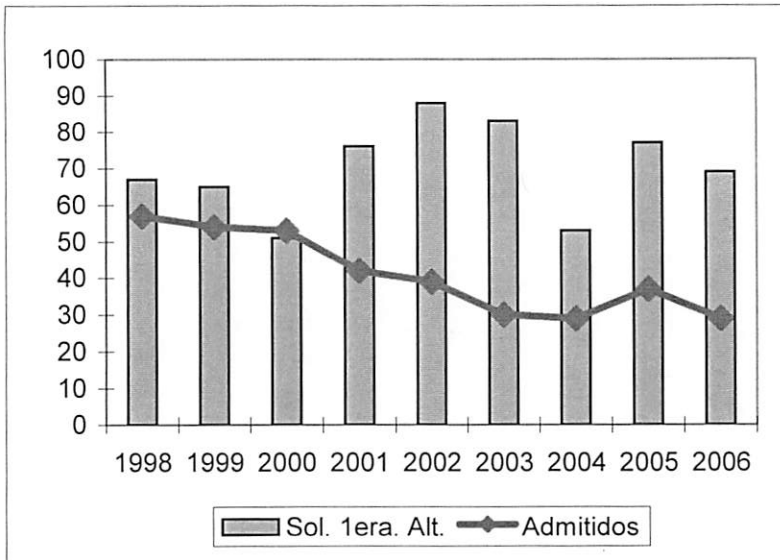
Psicología

Decanato de Asuntos Académicos

Año	IGS	Cupo	Total					Mat.	Total						
			Sol.	Sol. 1er.	Adm.	Ad/Sol	Matric.		1er.	2do.	3er.	4to.	%4to.	otro	Grad.
1998	254	60	244	67	57	23.4%	50	222	62	36	39	84	37.8%	1	
1999	254	60	222	65	54	24.3%	48	242	61	46	39	94	38.8%	2	39
2000	254	60	221	51	53	24.0%	41	217	52	40	46	74	34.1%	5	42
2001	250	40	217	76	42	19.4%	40	195	44	37	36	78	40.0%	0	42
2002	250	34	276	88	39	14.1%	36	205	42	40	34	89	43.4%	0	36
2003	260	31	263	83	30	11.4%	28	181	39	34	38	68	37.6%	2	55
2004	291	29	217	53	29	13.4%	27	174	31	31	35	76	43.7%	1	40
2005	300	39	241	77	37	15.4%	32	161	35	25	29	72	44.7%	0	40
2006	296	37	104	69	29	27.9%	30	157	36	30	28	61	38.9%	2	34

0.9

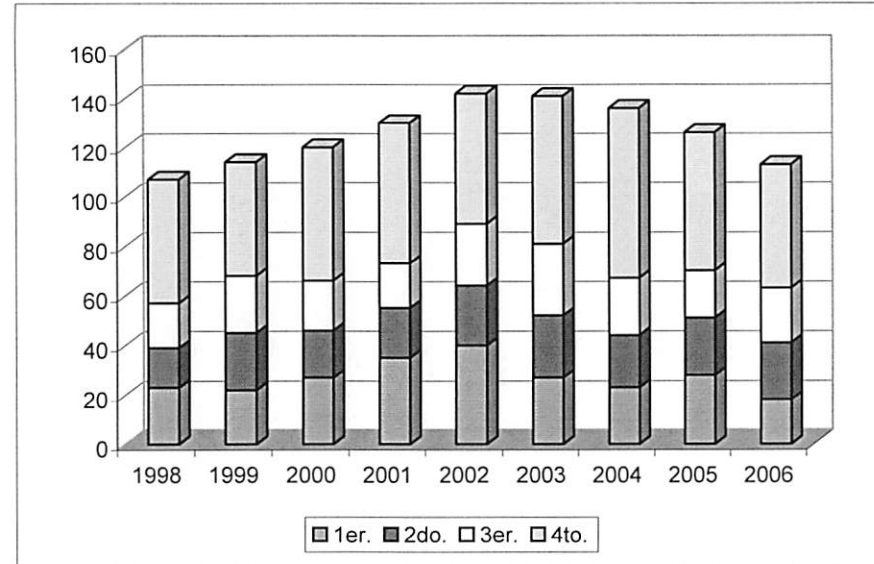
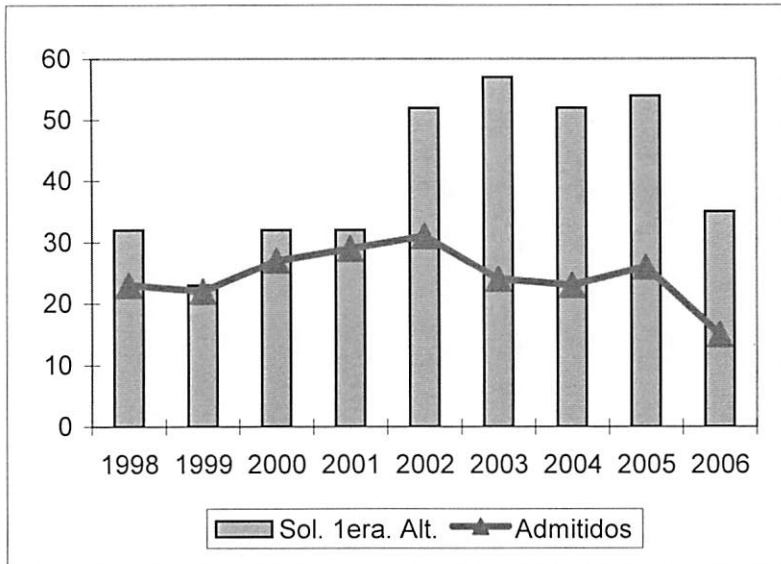
0.6%



Psicología y Salud Mental

Decanato de Asuntos Académicos

Año	IGS	Cupo	Total					Mat.	Total Matric.	Total						Grad.
			Sol.	Sol. 1er.	Adm.	Ad/Sol	%4to.			1er.	2do.	3er.	4to.	otro		
1998	230	25	103	32	23	22.3%	20	107	23	16	18	50	46.7%	0	19	
1999	230	25	113	23	22	19.5%	18	114	22	23	23	46	40.4%	1	25	
2000	230	25	125	32	27	21.6%	25	121	27	19	20	54	44.6%	1	22	
2001	230	25	160	32	29	18.1%	26	131	35	20	18	57	43.5%	1	28	
2002	230	25	188	52	31	16.5%	32	142	40	24	25	53	37.3%	0	28	
2003	260	25	187	57	24	12.8%	21	141	27	25	29	60	42.6%	0	27	
2004	291	25	159	52	23	14.5%	19	136	23	21	23	69	50.7%	0	38	
2005	300	27	133	54	26	19.5%	26	126	28	23	19	56	44.4%	0	30	
2006	299	19	53	35	15	28.3%	13	113	18	23	22	50	44.2%	0	2.8	

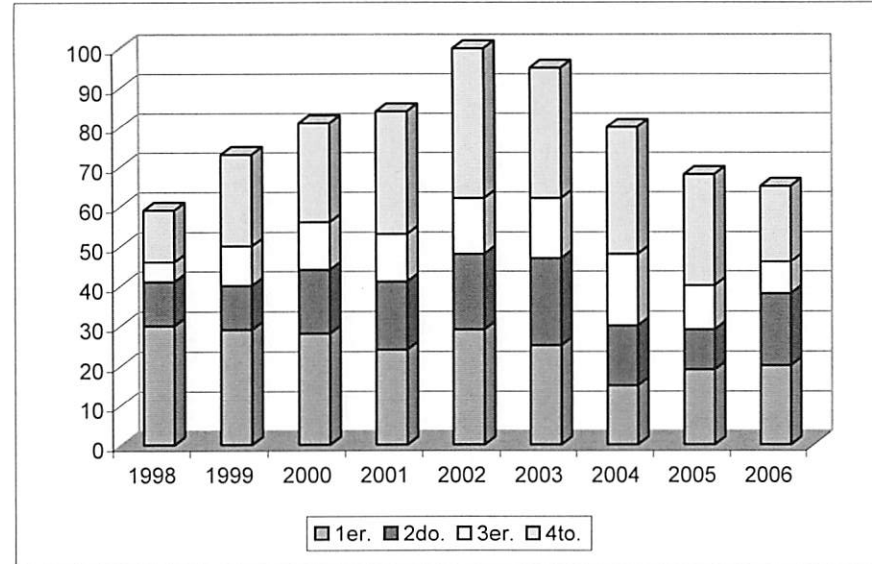
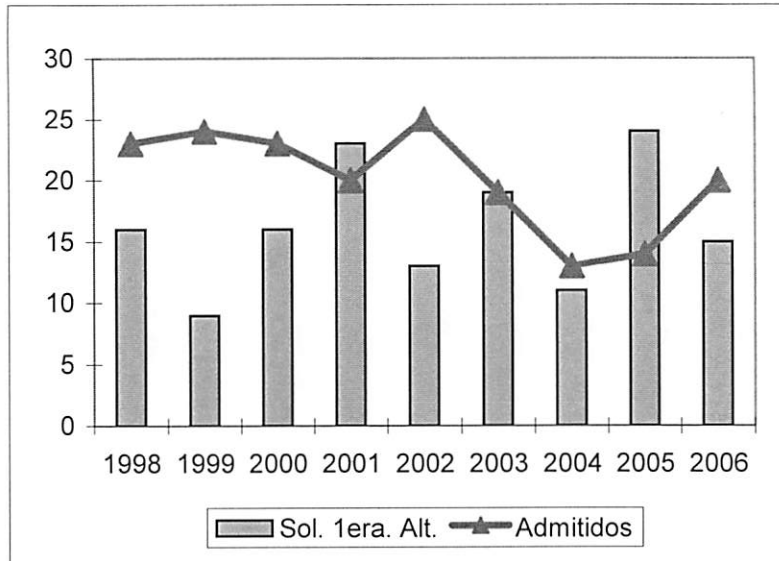


Sociología

Año	IGS	Cupo	Total					Mat.	Total Matric.	Decanato de Asuntos Académicos					
			Sol.	Sol. 1er.	Adm.	Ad/Sol	1er.			2do.	3er.	4to.	%4to.	otro	Grad.
1998	230	25	84	16	23	27.4%	19	59	30	11	5	13	22.0%	0	
1999	230	25	68	9	24	35.3%	19	73	29	11	10	23	31.5%	0	2
2000	230	25	55	16	23	41.8%	21	81	28	16	12	25	30.9%	0	11
2001	230	20	68	23	20	29.4%	19	84	24	17	12	31	36.9%	0	12
2002	230	20	72	13	25	34.7%	25	100	29	19	14	38	38.0%	0	19
2003	251	20	95	19	19	20.0%	18	95	25	22	15	33	34.7%	0	18
2004	263	11	74	11	13	17.6%	11	80	15	15	18	32	40.0%	0	12
2005	277	15	95	24	14	14.7%	17	69	19	10	11	28	40.6%	1	9
2006	274	19	35	15	20	57.1%	20	65	20	18	8	19	29.2%	0	13

0.5

1.2%

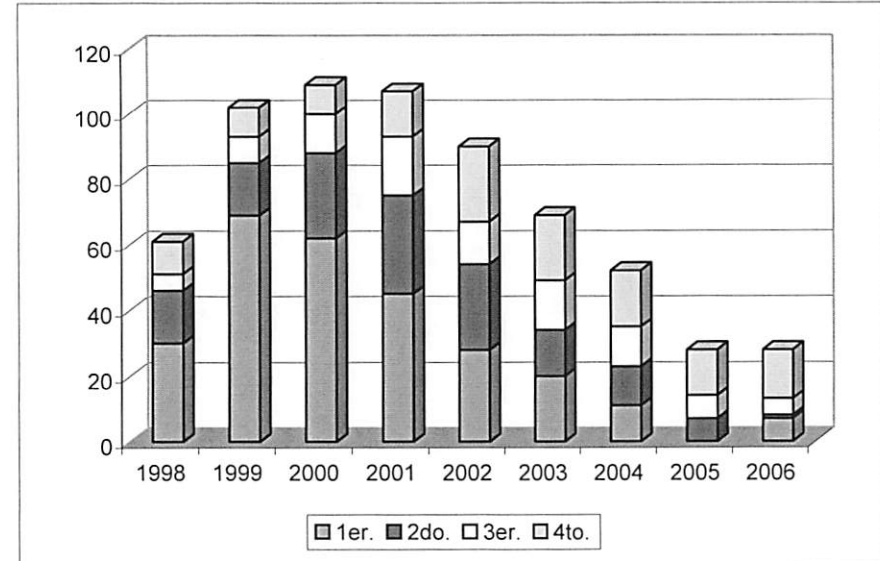
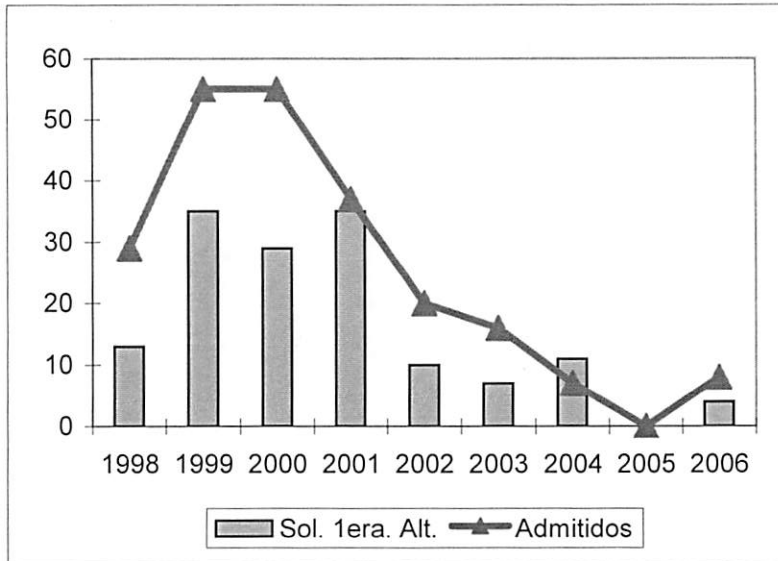


Economía

Año	IGS	Cupo	Total					Mat.	Total Matric.	Decanato de Asuntos Académicos					
			Sol.	Sol. 1er.	Adm.	Ad/Sol	1er.			2do.	3er.	4to.	%4to.	otro	Grad.
1998	220	30	51	13	29	56.9%	24	61	30	16	5	10	16.4%	0	
1999	220	50	103	35	55	53.4%	52	102	69	16	8	9	8.8%	0	8
2000	220	50	92	29	55	59.8%	49	117	62	26	12	9	7.7%	8	3
2001	230	32	96	35	37	38.5%	32	108	45	30	18	14	13.0%	1	2
2002	230	16	42	10	20	47.6%	16	90	28	26	13	23	25.6%	0	9
2003	236	16	44	7	16	36.4%	16	69	20	14	15	20	29.0%	0	8
2004	259	7	69	11	7	10.1%	7	52	11	12	12	17	32.7%	0	5
2005			Moratoria		0	0.0%	0	28	0	7	7	14	50.0%	0	8
2006	271	6	13	4	8	61.5%	7	28	7	1	5	15	53.6%	0	3

-3.0

5.6%

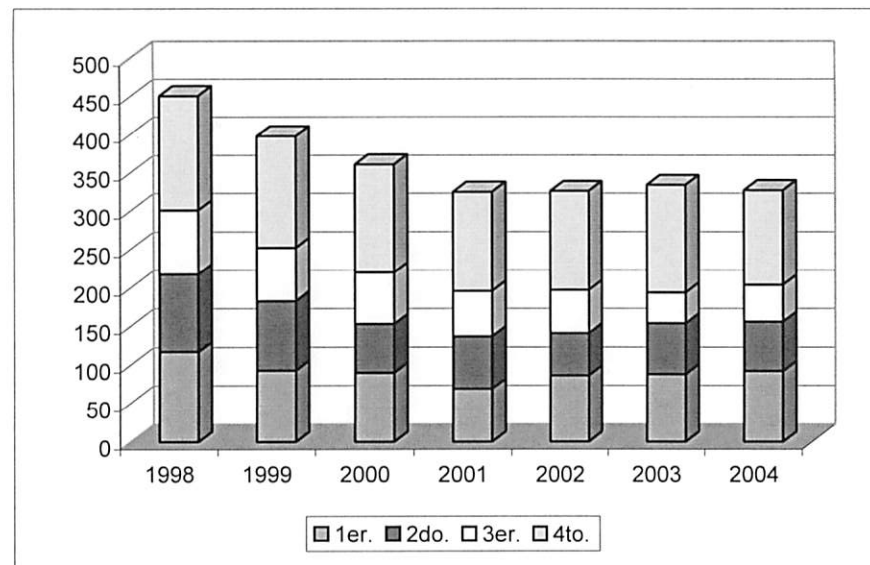
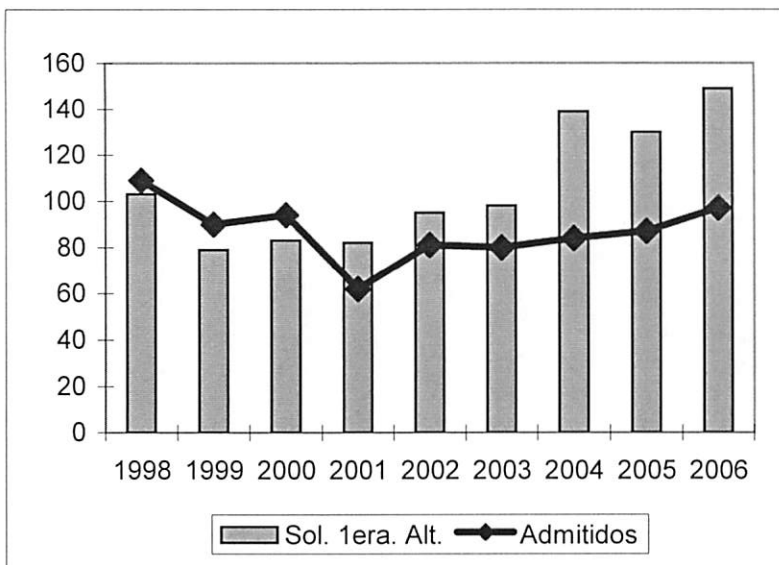


Biología

Año	IGS	Cupo	Total					Mat.	Total Matric.	Decanato de Asuntos Académicos					
			Sol.	Sol. 1er.	Adm.	Ad/Sol	1er.			2do.	3er.	4to.	%4to.	otro	Grad.
1998	300	125	508	103	109	21.5%	95	454	117	101	83	150	33.0%	3	
1999	300	100	402	79	90	22.4%	83	400	93	90	69	146	36.5%	2	79
2000	290	100	397	83	94	23.7%	80	372	90	63	67	141	37.9%	11	66
2001	300	80	393	82	62	15.8%	61	326	69	68	59	129	39.6%	1	54
2002	290	84	409	95	81	19.8%	81	329	86	55	56	129	39.2%	3	49
2003	295	82	400	98	80	20.0%	76	335	88	66	40	140	41.8%	1	36
2004	302	88	458	139	84	18.3%	80	329	92	64	48	123	37.4%	2	49
2005	302	90	429	130	87	20.3%	90	323	98	66	47	111	34.4%	1	42
2006	300	104	163	149	97	59.5%	95	350	103	75	52	119	34.0%	1	37

7.8

0.0%

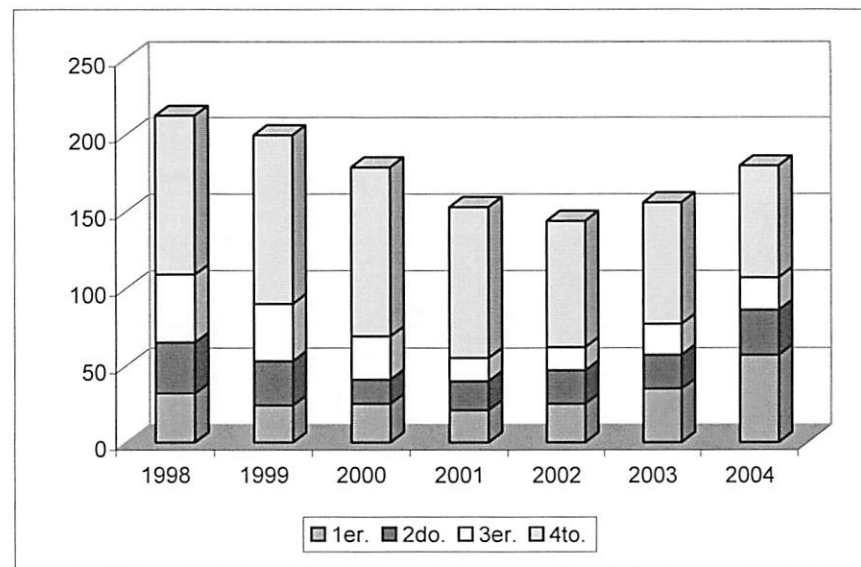
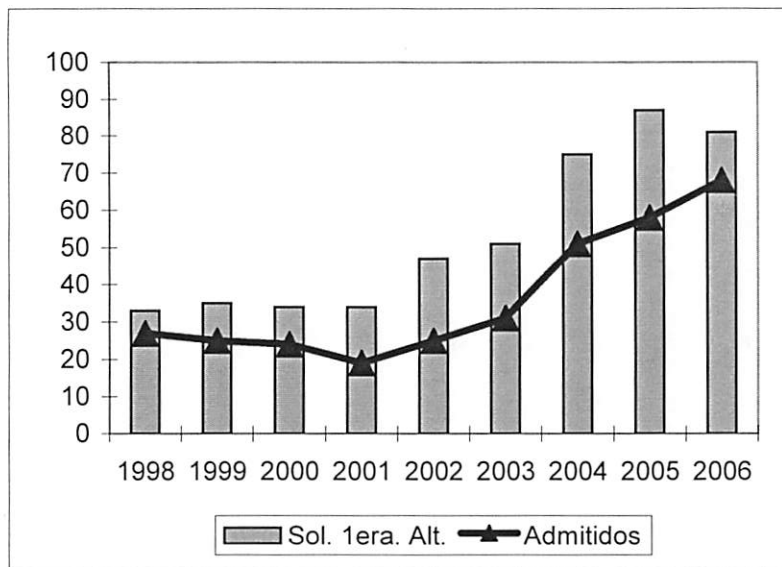


Química

Año	IGS	Cupo	Total						Decanato de Asuntos Académicos						
			Sol.	Sol. 1er.	Adm.	Ad/Sol	Mat.	Total Matric.	1er.	2do.	3er.	4to.	%4to.	otro	Grad.
1998	300	50	149	33	27	18.1%	26	214	32	33	44	104	48.6%	1	
1999	310	50	120	35	25	20.8%	23	202	24	29	37	110	54.5%	2	24
2000	310	50	120	34	24	20.0%	24	185	25	16	28	110	59.5%	6	42
2001	310	40	137	34	19	13.9%	18	156	21	19	15	98	62.8%	3	33
2002	300	25	144	47	25	17.4%	25	149	25	22	15	82	55.0%	5	48
2003	300	30	144	51	31	21.5%	30	157	35	22	20	79	50.3%	1	33
2004	304	57	230	75	51	22.2%	51	180	57	29	21	73	40.6%	0	27
2005	309	60	220	87	58	26.4%	58	214	62	49	25	77	36.0%	1	24
2006	302	63	90	81	68	75.6%	65	223	68	48	41	64	28.7%	2	34

7.5

-3.1%

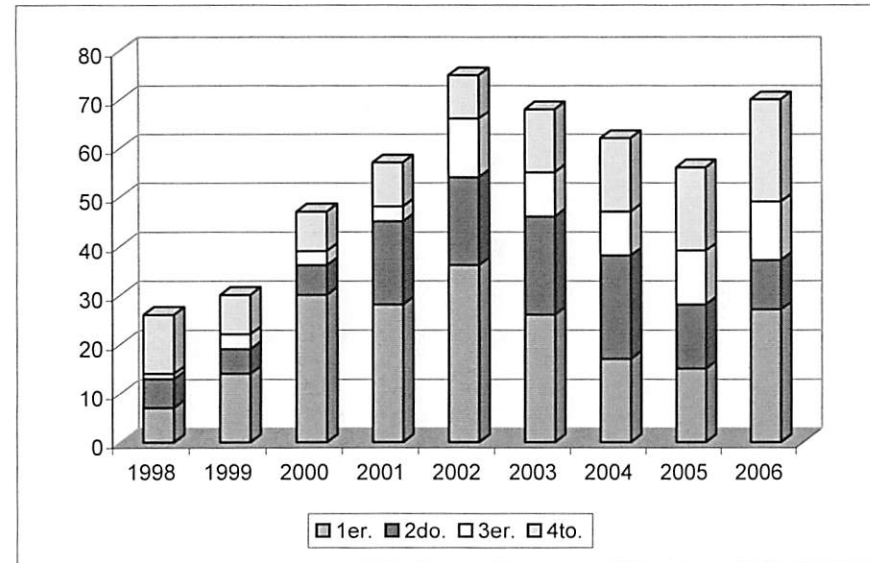
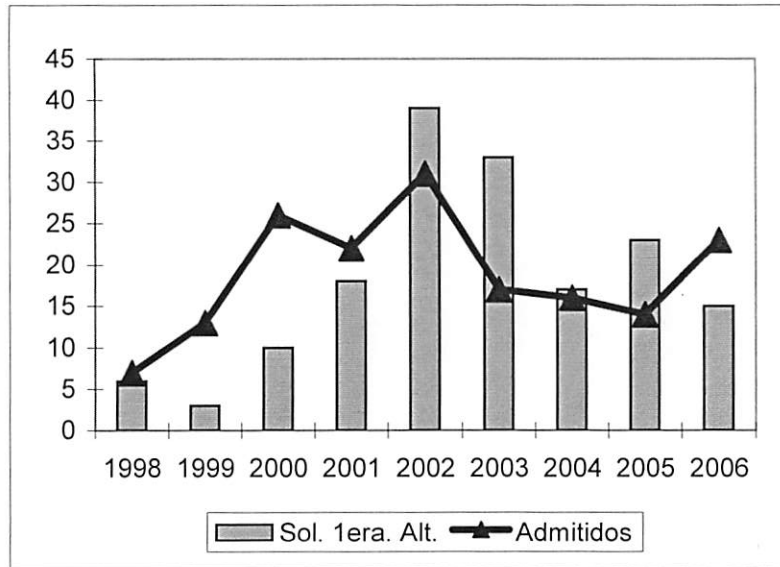


Matemáticas

Año	IGS	Cupo	Total					Mat.	Decanato de Asuntos Académicos						
			Sol.	Sol. 1er.	Adm.	Ad/Sol	%4to.		Matric.	1er.	2do.	3er.	4to.	%4to.	otro
1998	290	25	34	6	7	20.6%	7	26	7	6	1	12	46.2%	0	
1999	280	20	31	3	13	41.9%	12	33	14	5	3	8	24.2%	3	4
2000	250	25	46	10	26	56.5%	24	48	30	6	3	8	16.7%	1	4
2001	250	17	56	18	22	39.3%	21	57	28	17	3	9	15.8%	0	2
2002	250	25	120	39	31	25.8%	30	75	36	18	12	9	12.0%	0	2
2003	275	17	107	33	17	15.9%	16	68	26	20	9	13	19.1%	0	3
2004	292	14	90	17	16	17.8%	13	63	17	21	9	15	23.8%	1	2
2005	296	14	70	23	14	20.0%	14	56	15	13	11	17	30.4%	0	3
2006	290	17	22	15	23	104.5%	24	71	27	10	12	21	29.6%	1	3

2.1

-0.5%



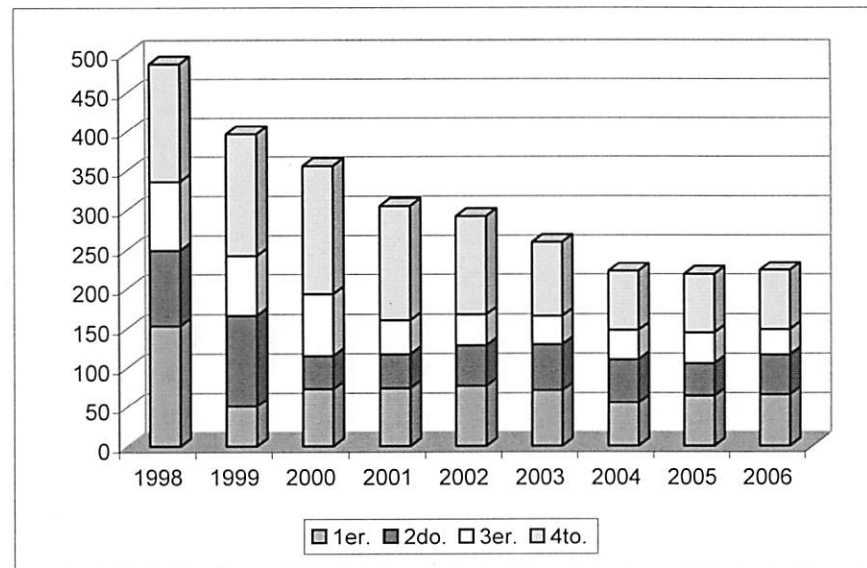
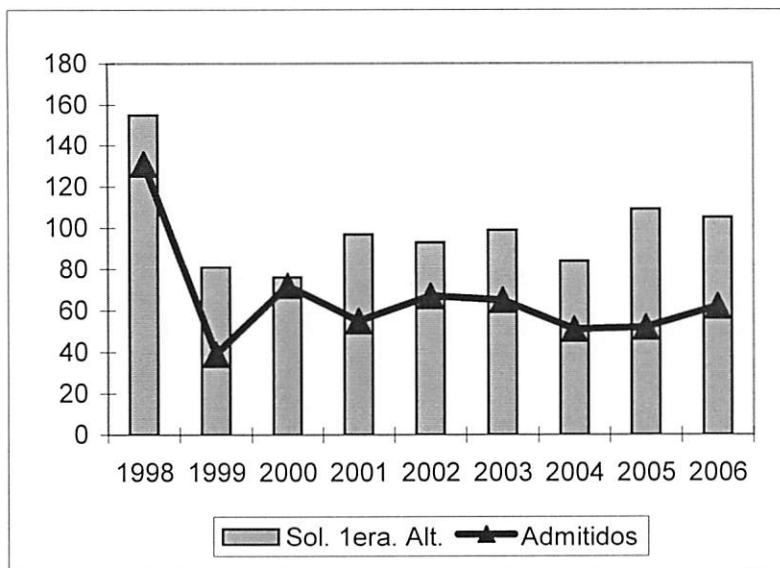
Programa General en Ciencias

Decanato de Asuntos Académicos

Año	IGS	Cupo	Total					Mat.	Total Matric.	Total					Grad.
			Sol.	Sol. 1er.	Adm.	Ad/Sol	%4to.			1er.	2do.	3er.	4to.	otro	
1998	290	125	428	155	131	30.6%	122	489	153	96	87	151	30.9%	2	
1999	310	100	317	81	39	12.3%	32	400	51	115	76	155	38.8%	3	62
2000	290	100	264	76	72	27.3%	61	360	73	42	78	163	45.3%	4	51
2001	300	75	305	97	55	18.0%	55	309	74	43	43	145	46.9%	4	76
2002	280	67	290	93	67	23.1%	66	290	77	51	39	125	43.1%	8	58
2003	290	53	306	99	65	21.2%	60	261	71	58	36	94	36.0%	2	53
2004	298	50	244	84	51	20.9%	49	222	55	55	37	75	33.8%	0	34
2005	300	56	264	109	52	19.7%	54	218	64	41	39	74	33.9%	0	24
2006	300	58	109	105	62	56.9%	62	223	66	50	32	75	33.6%	0	23

-1.6

-0.6%

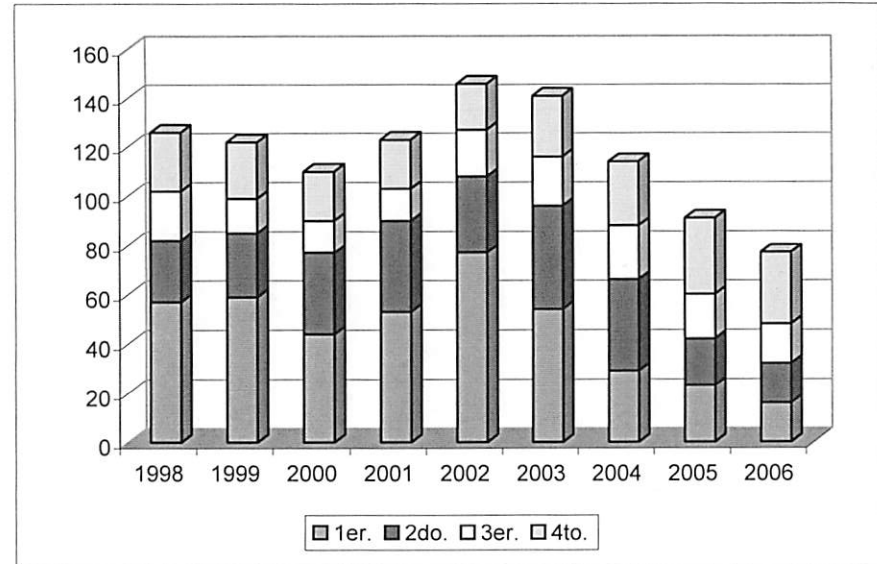
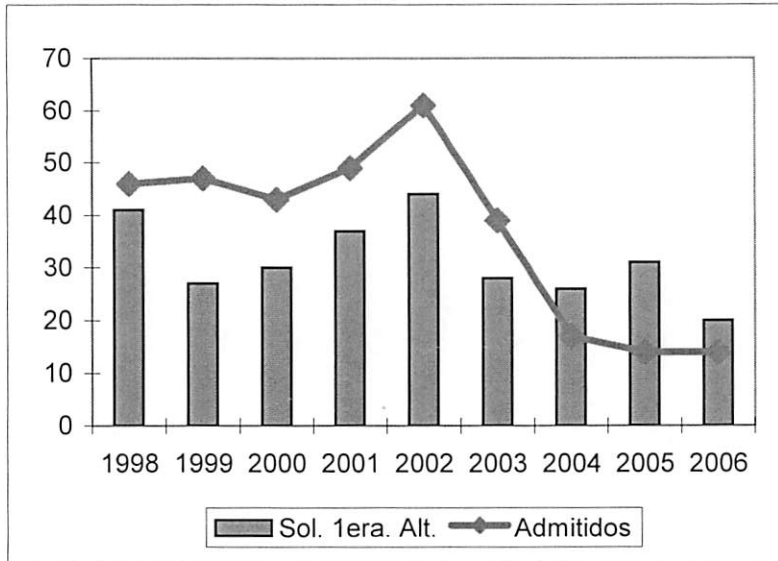


Humanidades Programa General

Año	IGS	Cupo	Total					Mat.	Decanato de Asuntos Académicos						
			Sol.	Sol. 1er.	Adm.	Ad/Sol	Adm. Ad/Sol		Total Matric.	1er.	2do.	3er.	4to.	%4to	otro
1998	230	45	160	41	46	28.8%	38	131	57	25	20	24	18.3%	5	
1999	230	45	137	27	47	34.3%	38	123	59	26	14	23	18.7%	1	10
2000	230	45	117	30	43	36.8%	28	113	44	33	13	20	17.7%	3	3
2001	230	30	168	37	49	29.2%	45	128	53	37	13	20	15.6%	2	2
2002	230	30	179	44	61	34.1%	57	148	77	31	19	19	12.8%	2	2
2003	247	29	112	28	39	34.8%	36	145	54	42	20	25	17.2%	4	6
2004	259	13	134	26	17	12.7%	16	117	29	37	22	26	22.2%	3	3
2005	272	15	144	31	14	9.7%	14	91	23	19	18	31	34.1%	0	8
2006	273	17	50	20	14	28.0%	13	78	16	16	16	29	37.2%	1	5

-1.5

2.2%

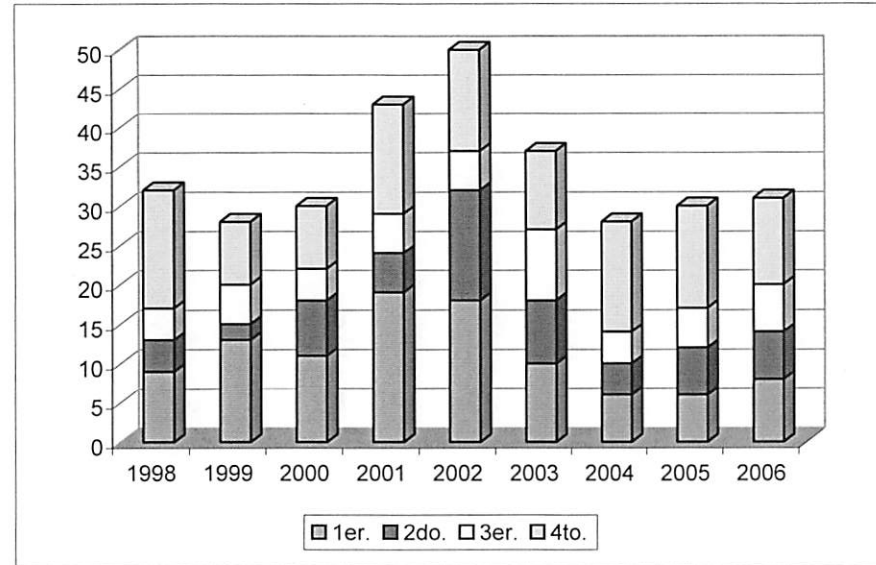
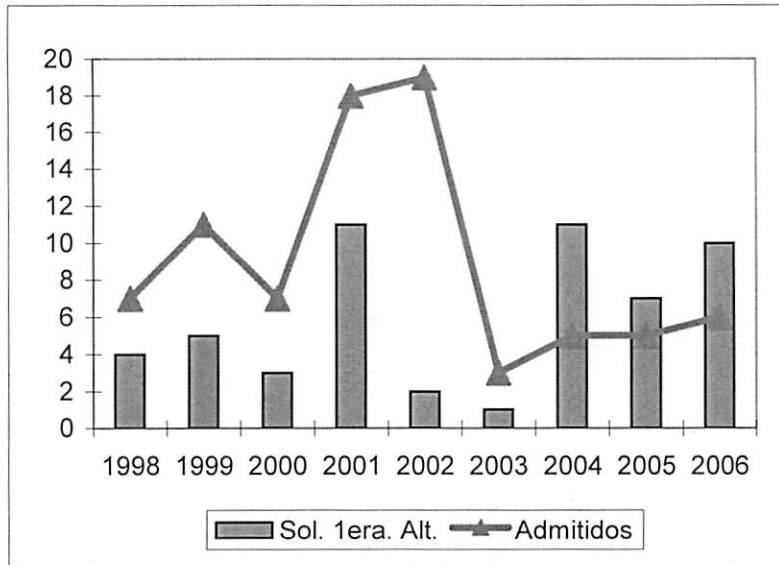


Historia

Año	IGS	Cupo	Total					Mat.	Decanato de Asuntos Académicos						
			Sol.	Sol. 1er.	Adm.	Ad/Sol	Total Matric.		1er.	2do.	3er.	4to.	%4to.	otro	Grad.
1998	230	10	22	4	7	31.8%	7	32	9	4	4	15	46.9%	0	
1999	230	10	25	5	11	44.0%	10	30	13	2	5	8	26.7%	2	3
2000	230	10	20	3	7	35.0%	7	33	11	7	4	8	24.2%	3	5
2001	230	10	34	11	18	52.9%	18	44	19	5	5	14	31.8%	1	3
2002	230	10	43	2	19	44.2%	13	50	18	14	5	13	26.0%	0	2
2003	236	3	12	1	3	25.0%	3	37	10	8	9	10	27.0%	0	7
2004	262	5	45	11	5	11.1%	4	28	6	4	4	14	50.0%	0	3
2005	268	5	33	7	5	15.2%	5	30	6	6	5	13	43.3%	0	1
2006	273	8	19	10	6	31.6%	6	31	8	6	6	11	35.5%	0	4

0.6

0.9%

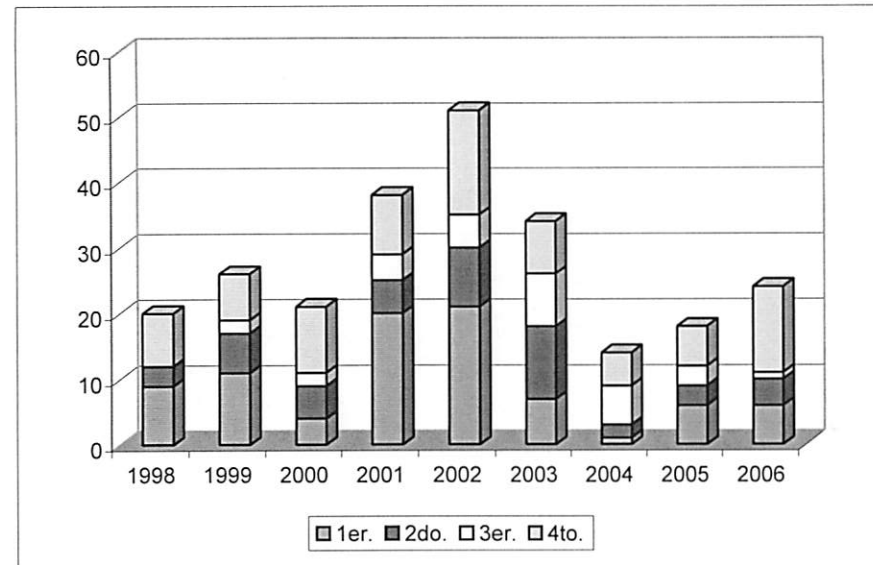
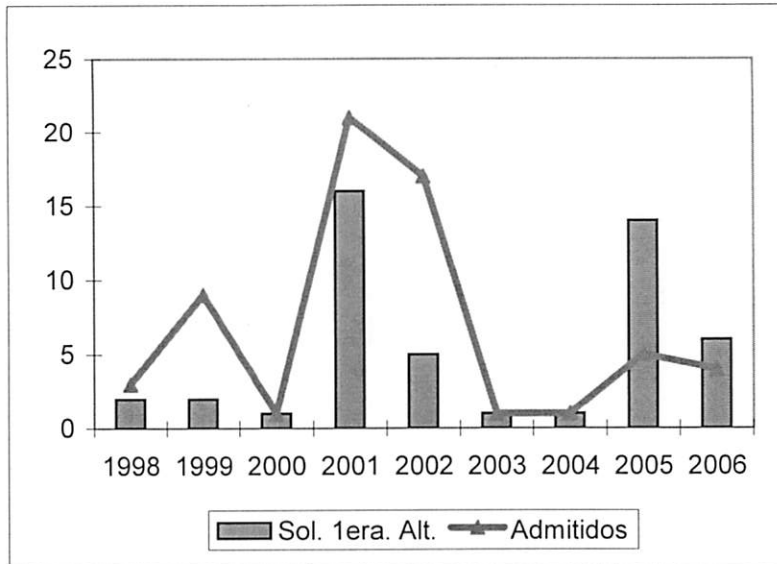


Estudios Hispánicos

Año	IGS	Cupo	Total					Mat.	Total Matric.	Decanato de Asuntos Académicos					
			Sol.	Sol. 1er.	Adm.	Ad/Sol	1er.			2do.	3er.	4to.	%4to.	otro	Grad.
1998	230	8	14	2	3	21.4%	3	22	9	3	0	8	36.4%	2	
1999	230	8	16	2	9	56.3%	9	26	11	6	2	7	26.9%	0	3
2000	230	8	12	1	1	8.3%	1	21	4	5	2	10	47.6%	0	3
2001	230	10	29	16	21	72.4%	20	39	20	5	4	9	23.1%	1	3
2002	230	10	32	5	17	53.1%	17	53	21	9	5	16	30.2%	2	1
2003	244	1	8	1	1	12.5%	1	34	7	11	8	8	23.5%	0	4
2004	254	1	12	1	1	8.3%	1	14	1	2	6	5	35.7%	0	4
2005	267	5	47	14	5	10.6%	6	18	6	3	3	6	33.3%	0	4
2006	269	5	12	6	4	33.3%	5	25	6	4	1	13	52.0%	1	0

0.6

1.0%

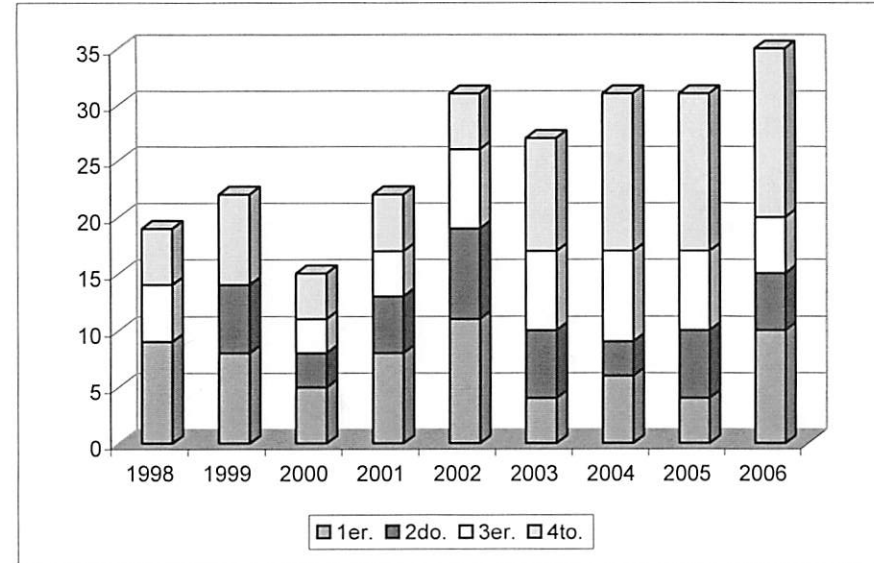
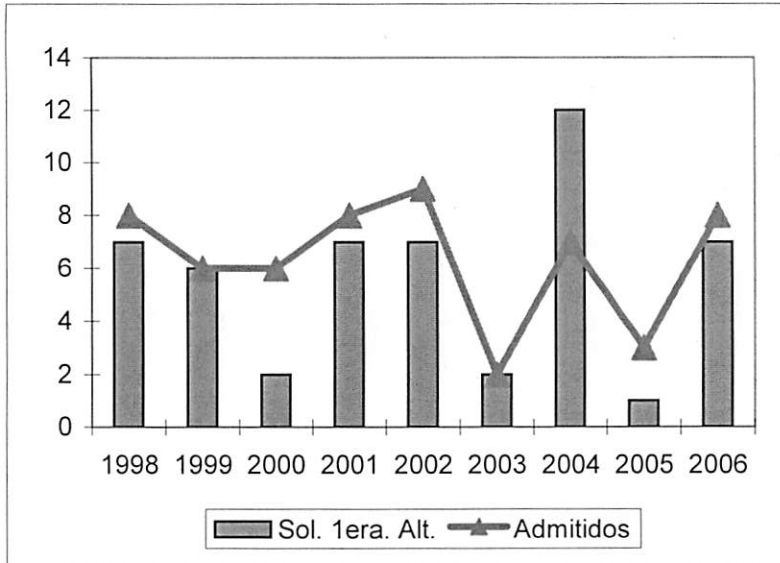


Inglés

Año	IGS	Cupo	Total					Mat.	Total Matric.	Decanato de Asuntos Académicos					
			Sol.	Sol. 1er.	Adm.	Ad/Sol	1er.			2do.	3er.	4to.	%4to.	otro	Grad.
1998	230	10	19	7	8	42.1%	8	21	9	0	5	5	23.8%	2	
1999	230	10	12	6	6	50.0%	5	22	8	6	0	8	36.4%	0	1
2000	230	10	18	2	6	33.3%	4	16	5	3	3	4	25.0%	1	4
2001	230	8	24	7	8	33.3%	7	22	8	5	4	5	22.7%	0	3
2002	230	8	21	7	9	42.9%	8	31	11	8	7	5	16.1%	0	0
2003	234	2	9	2	2	22.2%	2	27	4	6	7	10	37.0%	0	3
2004	263	7	39	12	7	17.9%	6	31	6	3	8	14	45.2%	0	2
2005	263	3	21	1	3	14.3%	3	31	4	6	7	14	45.2%	0	4
2006	268	9	22	7	8	36.4%	7	36	10	5	5	15	41.7%	1	4

0.0

2.5%

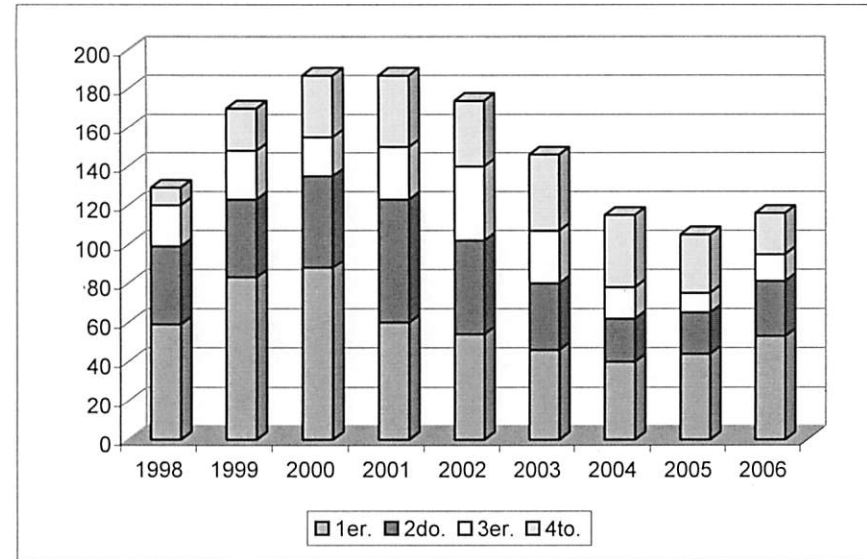
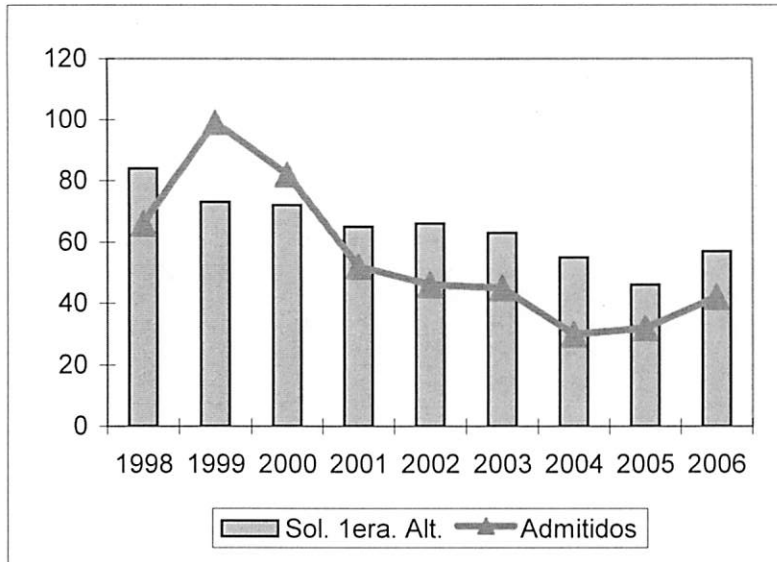


Administración de Empresas Prog General

Año	IGS	Cupo	Total					Mat.	Decanato de Asuntos Académicos						
			Sol.	Sol. 1er.	Adm.	Ad/Sol	Adm. / Sol.		Total Matric.	1er.	2do.	3er.	4to.	%4to.	otro
1998	250	70	294	84	66	22.4%	46	131	59	40	21	9	6.9%	2	
1999	245	130	287	73	99	34.5%	78	172	83	40	25	22	12.8%	2	3
2000	245	100	232	72	82	35.3%	68	191	88	47	20	32	16.8%	4	3
2001	250	55	294	65	52	17.7%	46	187	60	63	27	37	19.8%	0	10
2002	255	50	223	66	46	20.6%	41	175	54	48	38	34	19.4%	1	4
2003	257	45	188	63	45	23.9%	39	147	46	34	27	39	26.5%	1	7
2004	266	30	179	55	30	16.8%	28	115	40	22	16	37	32.2%	0	12
2005	266	34	158	46	32	20.3%	30	105	44	21	10	30	28.6%	0	5
2006	267	39	98	57	42	42.9%	40	117	53	28	14	21	17.9%	1	6

-3.8

2.2%



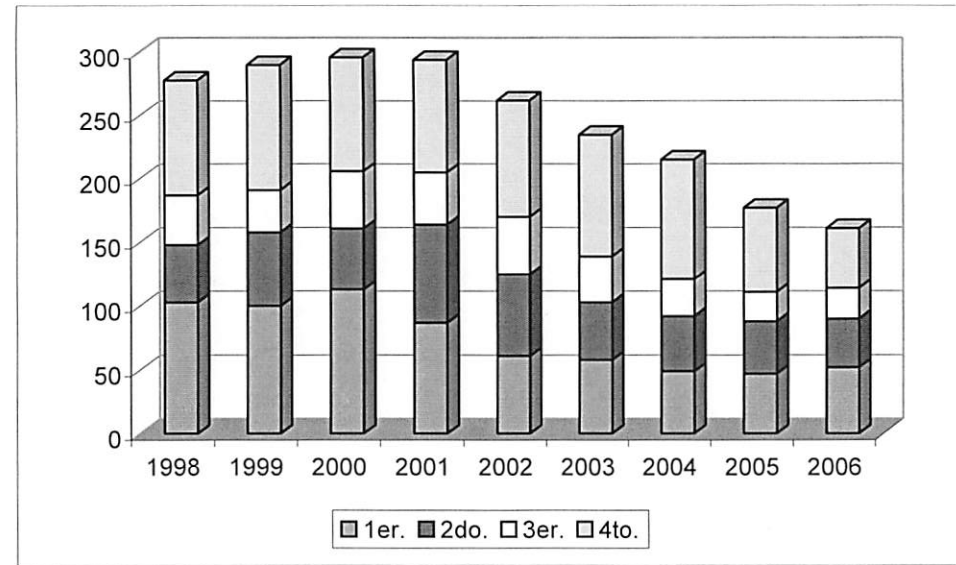
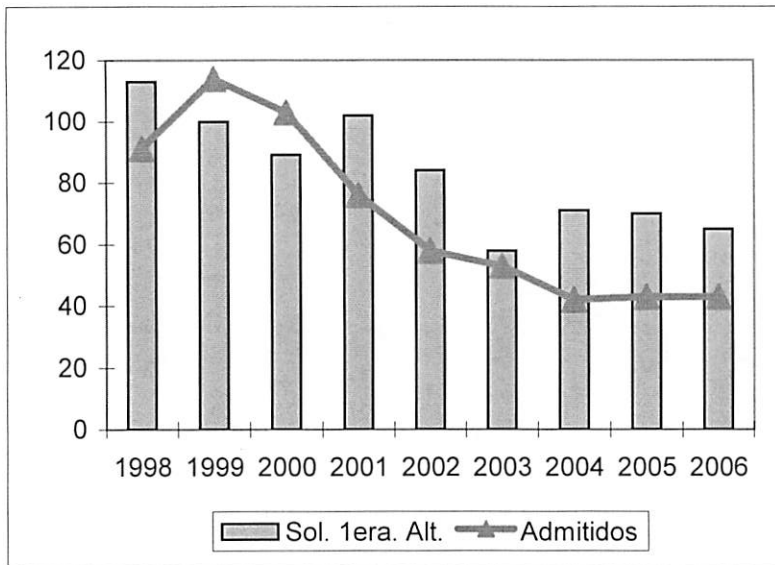
Gerencia

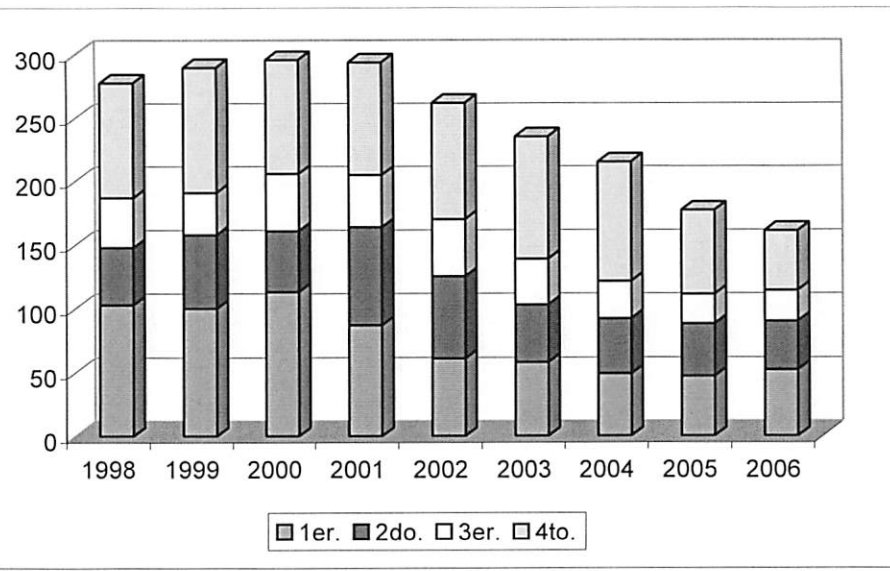
Decanato de Asuntos Académicos

Año	IGS	Cupo	Total					Mat.	Total						
			Sol.	Sol. 1er.	Adm.	Ad/Sol	Matric.		1er.	2do.	3er.	4to.	%4to.	otro	Grad.
1998	240	98	366	113	91	24.9%	74	279	103	45	39	91	32.6%	1	
1999	240	120	406	100	114	28.1%	77	293	100	58	33	99	33.8%	3	24
2000	245	120	324	89	103	31.8%	86	304	113	48	45	90	29.6%	8	43
2001	250	80	352	102	76	21.6%	69	298	87	77	41	89	29.9%	4	48
2002	255	60	255	84	58	22.7%	51	264	61	64	45	92	34.8%	2	50
2003	258	54	223	58	53	23.8%	48	240	58	45	36	96	40.0%	5	44
2004	266	43	245	71	42	17.1%	37	216	49	43	29	94	43.5%	1	37
2005	268	43	237	70	43	18.1%	42	177	47	41	23	66	37.3%	0	42
2006	268	43	118	65	43	36.4%	40	163	52	38	24	47	28.8%	2	42

-6.0

0.6%



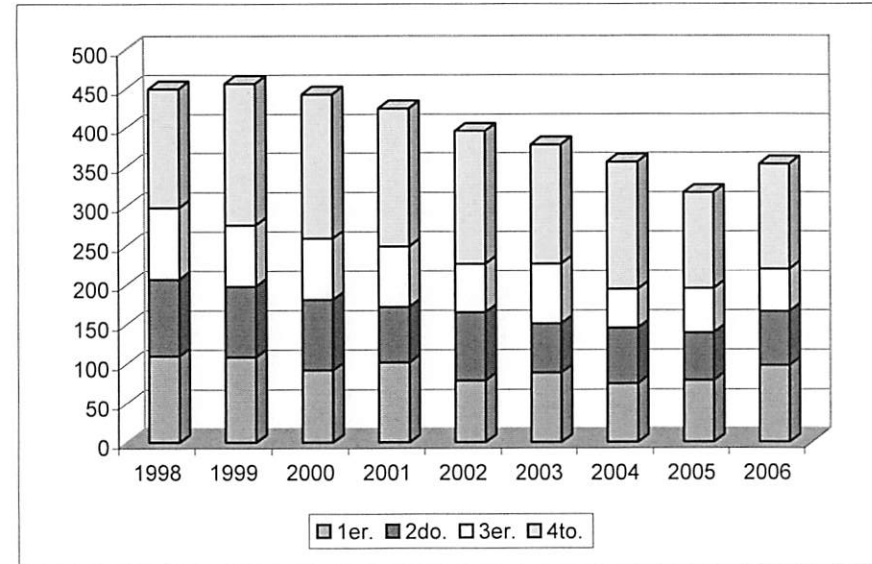
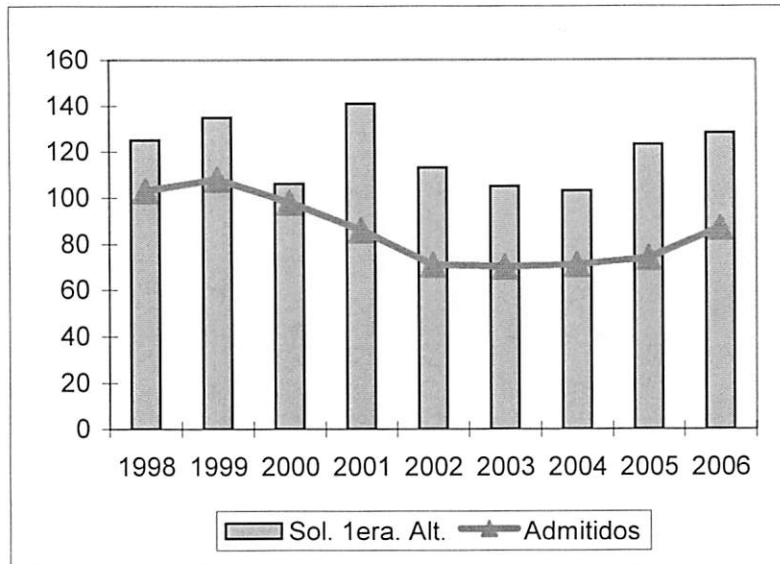


Contabilidad

Año	IGS	Cupo	Total					Mat.	Total Matric.	Decanato de Asuntos Académicos					
			Sol.	Sol. 1er.	Adm.	Ad/Sol	1er.			2do.	3er.	4to.	%4to.	otro	Grad.
1998	265	111	418	125	103	24.6%	90	453	110	97	91	152	33.6%	3	
1999	265	130	406	135	108	26.6%	98	460	109	89	78	181	39.3%	3	46
2000	265	120	323	106	98	30.3%	80	452	92	89	78	184	40.7%	9	62
2001	265	90	341	141	86	25.2%	78	430	102	70	77	176	40.9%	5	76
2002	270	90	298	113	71	23.8%	63	396	79	86	62	169	42.7%	0	62
2003	280	80	270	105	70	25.9%	74	380	89	62	76	151	39.7%	2	64
2004	280	74	285	103	71	24.9%	68	357	75	70	49	162	45.4%	1	62
2005	285	74	287	123	74	25.8%	67	330	79	60	56	122	37.0%	3	56
2006	282	83	141	128	87	61.7%	85	354	98	68	54	133	37.6%	1	52

-1.1

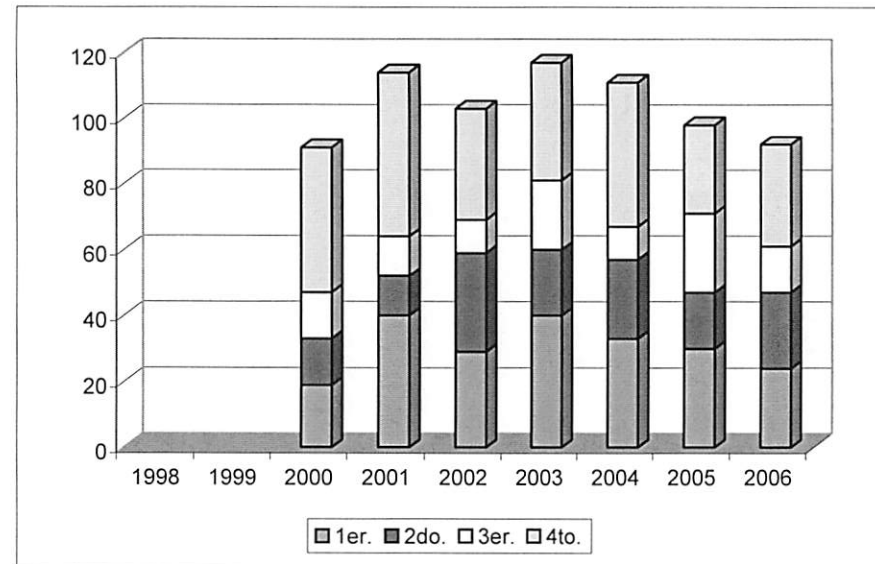
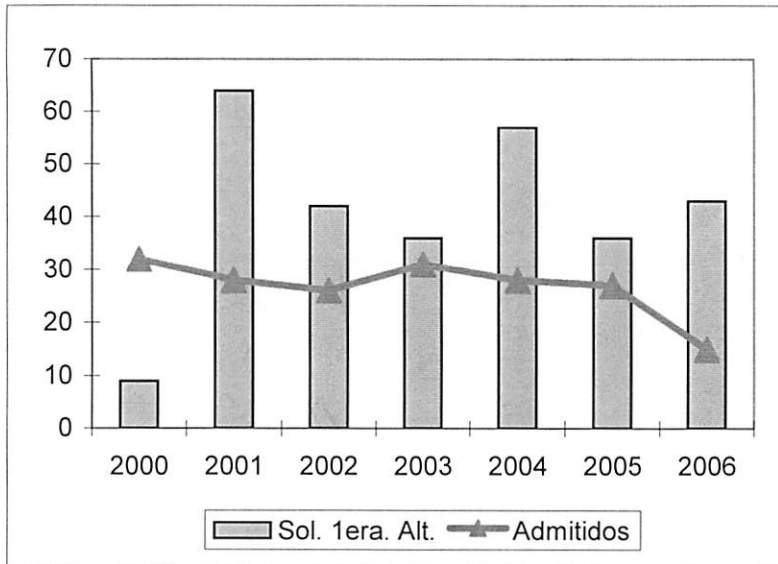
0.3%



Sistemas de Oficina

Decanato de Asuntos Académicos

Año	IGS	Cupo	Total Sol.	Sol. 1er.	Adm.	Ad/Sol	Mat.	Total Matric.	1er.	2do.	3er.	4to.	%4to.	otro	Grad.
1998															
1999															
2000	220	30	21	9	32	152.4%	29	95	19	14	14	44	46.3%	4	
2001	230	25	159	64	28	17.6%	27	115	40	12	12	50	43.5%	1	17
2002	230	30	120	42	26	21.7%	25	105	29	30	10	34	32.4%	2	25
2003	230	30	106	36	31	29.2%	30	117	40	20	21	36	30.8%	0	12
2004	254	27	177	57	28	15.8%	26	111	33	24	10	44	39.6%	0	14
2005	257	28	111	36	27	24.3%	25	99	30	17	24	27	27.3%	1	19
2006	254	18	87	43	15	17.2%	18	93	24	23	14	31	33.3%	1	18
				2.2									-2.3%		



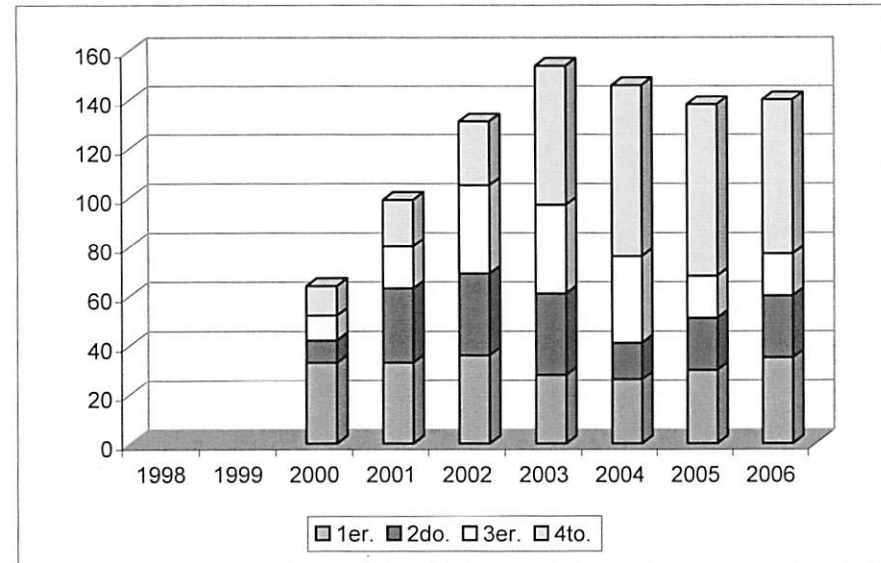
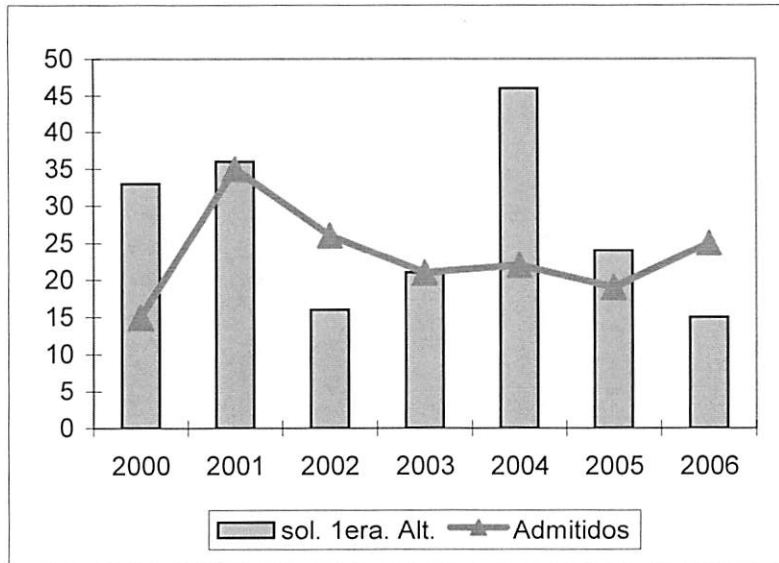
Administración de Oficina

Decanato de Asuntos Académicos

Año	IGS	Cupo	Administración de Oficina					Mat.	Decanato de Asuntos Académicos							
			Total Sol.	Sol. 1er.	Adm.	Ad/Sol	Total Matric.		1er.	2do.	3er.	4to.	%4to.	otro	Grad.	
1998																
1999																
2000	220	30	60	33	15	25.0%	15	66	33	9	10	12	18.2%	2		
2001	230	30	116	36	35	30.2%	31	101	33	30	17	19	18.8%	2	1	
2002	230	25	96	16	26	27.1%	25	132	36	33	36	26	19.7%	1	10	
2003	230	24	81	21	21	25.9%	20	154	28	33	36	57	37.0%	0	2	
2004	255	21	137	46	22	16.1%	19	147	26	15	35	70	47.6%	1	14	
2005	255	20	98	24	19	19.4%	22	138	30	21	17	70	50.7%	0	22	
2006	256	24	97	15	25	25.8%	26	141	35	25	17	63	44.7%	1	24	

-1.7

6.1%



Grado Asociado en TAOF

Decanato de Asuntos Académicos

Año	IGS	Cupo	Total					Mat.	Total							
			Sol.	Sol. 1er.	Adm.	Ad/Sol	Matric.		1er.	2do.	3er.	4to.	%4to.	otro	Grad.	
1998								129	62	38					29	
1999								115	62	19					34	24
2000							37	54	16	2	24	9	16.7%	3	7	
2001							34	75	24	21	7	21	28.0%	2	7	
2002							17	61	7	19	10	2	3.3%	13	1	
2003	229	24	97	35	21	21.6%	20	40	26	5	8	1	2.5%	0	2	
2004	236	18	81	34	21	25.9%	15	34	20	12	1	1	2.9%	0	3	
2005	246	20	101	28	19	18.8%	27	37	22	12	3	0	0.0%	0	1	
2006	250	19	54	32	20	37.0%	17	39	20	15	2	1	2.6%	1	1	

-1.5

-3.5%

